



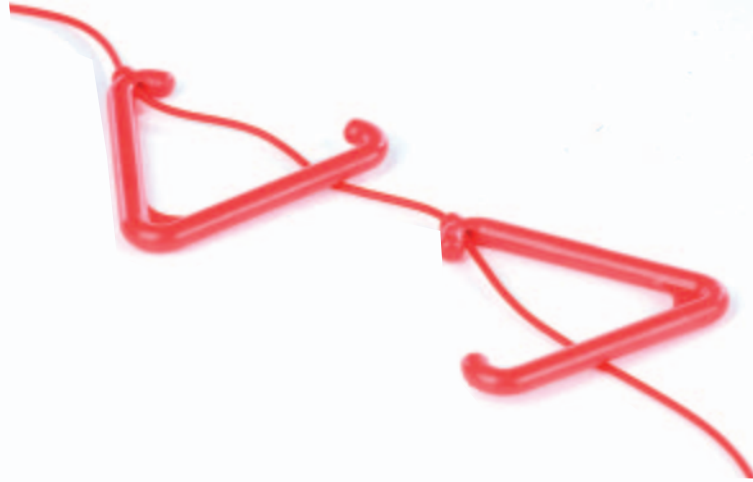
With many health authorities now insisting their nursecall and disabled persons toilet alarm pull cords are regularly updated to help stop the spread of germs, C-TEC has released an anti-bacterial replacement pull cord pack for use with its NC951, 800 Series and Quantec ceiling pull units.



NCP-13

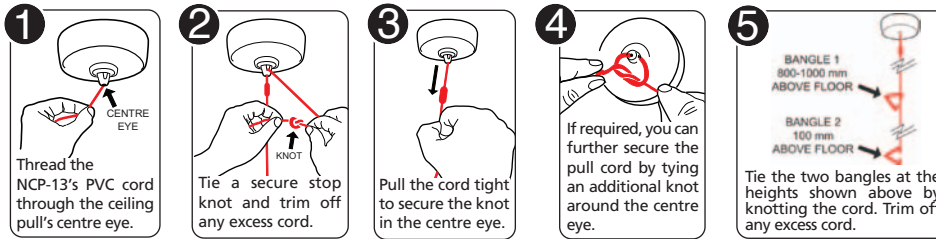
## NCP-13

### UNIVERSAL ANTI-BACTERIAL REPLACEMENT PULL CORD PACK

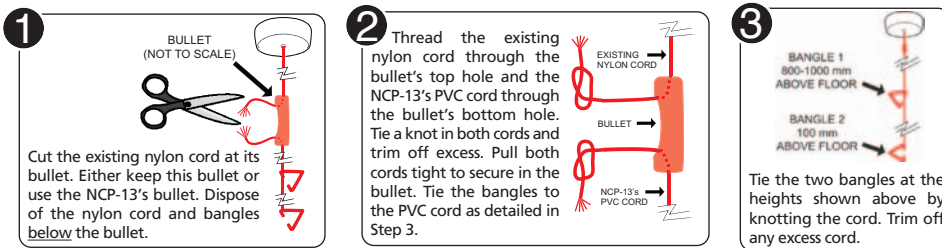


- Includes three metres of red vinyl encapsulated cord, two BS8300-compliant triangular bangles and a red fixing bullet
- Cord has integral properties that can help prevent the spread of infections such as MRSA, e.coli, c.diff, S Aureus and the Norovirus
- Designed for use with C-TEC's NC807C and QT607 ceiling pull units
- Compatible with many other manufacturers' ceiling pull units (see universal connection details overleaf)
- Easy to clean using a clean cloth and mild detergent
- Trades at just £15.34
- Fully compliant with the requirements of BS8300 (the code of practice for the design of buildings and their approaches to meet the needs of disabled people)
- Supplied in a protective plastic bag (to keep the cord clean and tidy prior to system testing and commissioning)
- Replacement nylon pull cord packs also available (part no. NCP-12)
- Ideal for use in nursing homes, hospitals, doctors' surgeries, clinics and any other area where infection control is imperative to prevent the spread of germs and bacteria

## NCP-13 connection to NC807C and QT607 ceiling pull units (with a centre fixing eye)



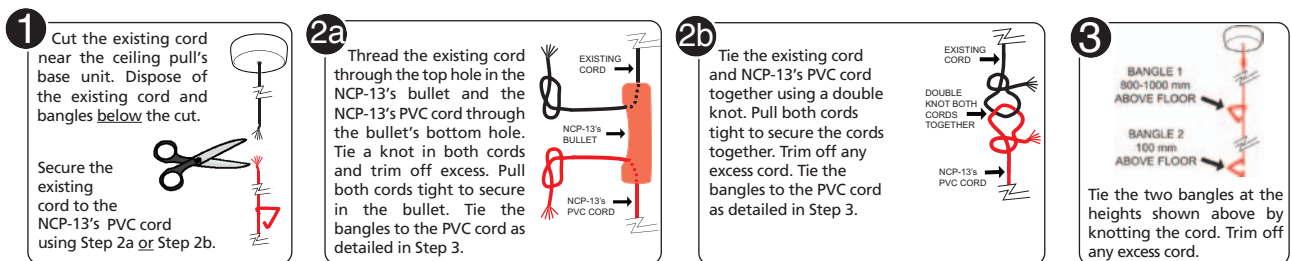
## NCP-13 connection to NC807C and QT607 ceiling pull units (without a centre fixing eye)



## NCP-13 connection to a third-party ceiling pull unit (with a fixing bullet)

Follow the steps detailed above. Either retain and use the existing bullet or, alternatively, use the NCP-13's bullet to secure both the existing and PVC cords.

## NCP-13 connection to a third-party ceiling pull unit (without a fixing bullet)



## Hints and tips (applicable to all NCP-13 connection methods)

