



**KNIGHT FIRE & SECURITY PRODUCTS LTD**  
 Unit 84, Seawall Road Industrial Estate  
 Tremorfa, Cardiff CF24 5TH  
 Tel: 029 2048 8129  
 Fax: 029 2048 9132  
[www.knightplastics.com](http://www.knightplastics.com)

**Universal Roller Shutter Contact with Selectable Resistors**

**Part Code: YF10C**

**Security Grade 3 Environmental Class 3**

**Manufactured to TS50131-2-6**



**Description**

The YF10C is a universal fully sealed roller shutter contact with integral magnetic interference tamper switch detection. It meets all of the necessary requirements for magnetic contacts permitting it to be used within Grade 2 & 3 installations. The contact has installer selectable End of Line (EOL) and alarm contact bypass resistors. It may be fitted to left and right hand sides, and in shared zone configurations.

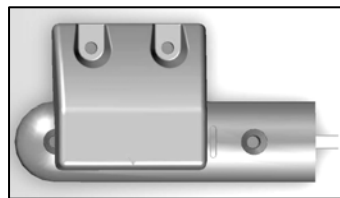
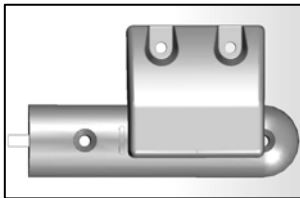
**Installation**

Select the appropriate wiring format and/or resistor values (see table right). Ensure that unused resistor cabling cannot short out to used wires or other surfaces. Fix the units to the mounting surfaces using the fixing holes provided. See illustrations below.

**Horizontal Magnet - Viewed from Inside Building**

Left Hand

Right Hand



**Vertical Magnet - Viewed from Inside Building**

Left Hand

Right Hand



**Wiring - Single Zone**

The YF10C is only suitable for fully supervised (EOL) formats. Use the appropriate colour wires to achieve the necessary end of line and alarm bypass resistor values for the control panel (See Table, Top-Right). Only two connections are made to the control panel alarm circuit and this provides both the alarm and tamper information.

**Operation**

The three tables give the achievable operating gaps & for each of the two operational axes.

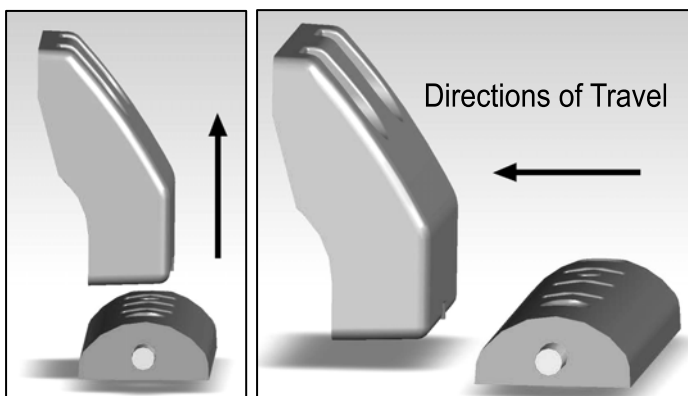
Mounting Surface	Non-Magnetic	Magnetic
Make Distance	35mm	20mm
Break Distance	45mm	30mm

**Vertical Movement**

**Horizontal Movement**

Mounting Surface	Non-Magnetic	Magnetic
Make Distance	40mm	10mm
Break Distance	60mm	25mm

Mounting Surface	Non-Magnetic	Magnetic
Make Distance	23mm	n/a
Break Distance	43mm	n/a

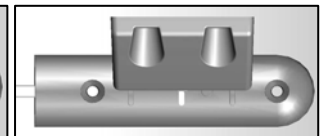
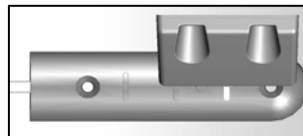


**IMPORTANT:** Ensure unused wires cannot short to any other wire or connection, other than indicated by the table above

**Longitudinal Movement**

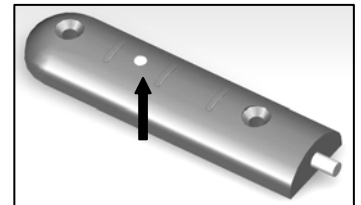
Maximum Magnet Position

Minimum Magnet Position



The YF10A is not intended for operation where the magnet travels in a longitudinal direction over the contact. However the contact will operate correctly provided the magnet is within the two alignment marks of the centre dot. (See below).

The Contact Centre is marked with a small surface dot. For optimum performance the magnet centre should be aligned with this dot, arrowed.



**Wiring - Shared Zone**

The wiring table under indicates the necessary connections and loops to provide shared zone operation. Use only the wires indicated.

Control Panel	Value		Contact 1		Contact 2	
	EOL	Alarm	EOL	Alarm	EOL	Alarm
Honeywell Ademco	1K	1K	Orange	Green/Blue	Black	Green/Blue
Scantronic, Menvier, Texecom, Pyronix, Castle	2K2	4K7	Orange	Red/Yellow	Red/Yellow	Green/White
Aritech	4K7	4K7	Orange	Green/White	Yellow	Green/White
Gardtec	4K7	6K8	Orange	Green	Yellow	Green

