

Weatherproof Door Holder

Arguably the single most important fire safety mechanism, electromagnetic door holders guard against the lethal spread of toxic smoke and fumes - by far the greatest cause of death in fires.

The Vimpex EN 1155 approved weatherproof door holder offers the installer an excellent solution for harsh environments and outdoor use.

Mounted onto a fixed surface, these door holders ensure retention of the fire door by means of a smart metallic keeper plate. Interfaced with the fire alarm system, the door holders are de-energised as soon as the fire is detected thus releasing the door without the potentially harmful delay suffered by other types of devices.



Features

- Ideal for external use and harsh environments
- Robust steel construction - 1200N holding force
- Sealed against water ingress (IP65)
- Available in 230 V ac and 24 V dc
- Supplied with keeper plate
- Terminated via IP65 connector (supplied)

Spares & Accessories

DH/KP/WP: Keeper Plate

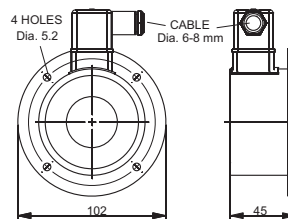
Specification

Part Number:	Description	Rated Voltage	Nominal Current	Holding Force	Temperature Range	IP Rating	Power Rating	Weight
DH/WP/24:	DC	24 V dc	290 mA	1200N	-30 to +80°C	IP65	7W	2.0Kg
DH/WP/230:	AC	230 V ac	43 mA	1200N	-30 to +80°C	IP65	10W	2.0Kg

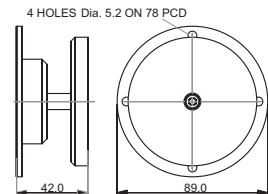
Installation

Dimensions (mm)

Weatherproof Door Holders



Keeper Plate



Vimpex Limited

Star Lane, Great Wakering
Essex SS3 0PJ England
Tel: +44 (0) 1702 216999
Fax: +44 (0) 1702 216699
E-mail: sales@vimpex.co.uk
www.vimpex.co.uk

