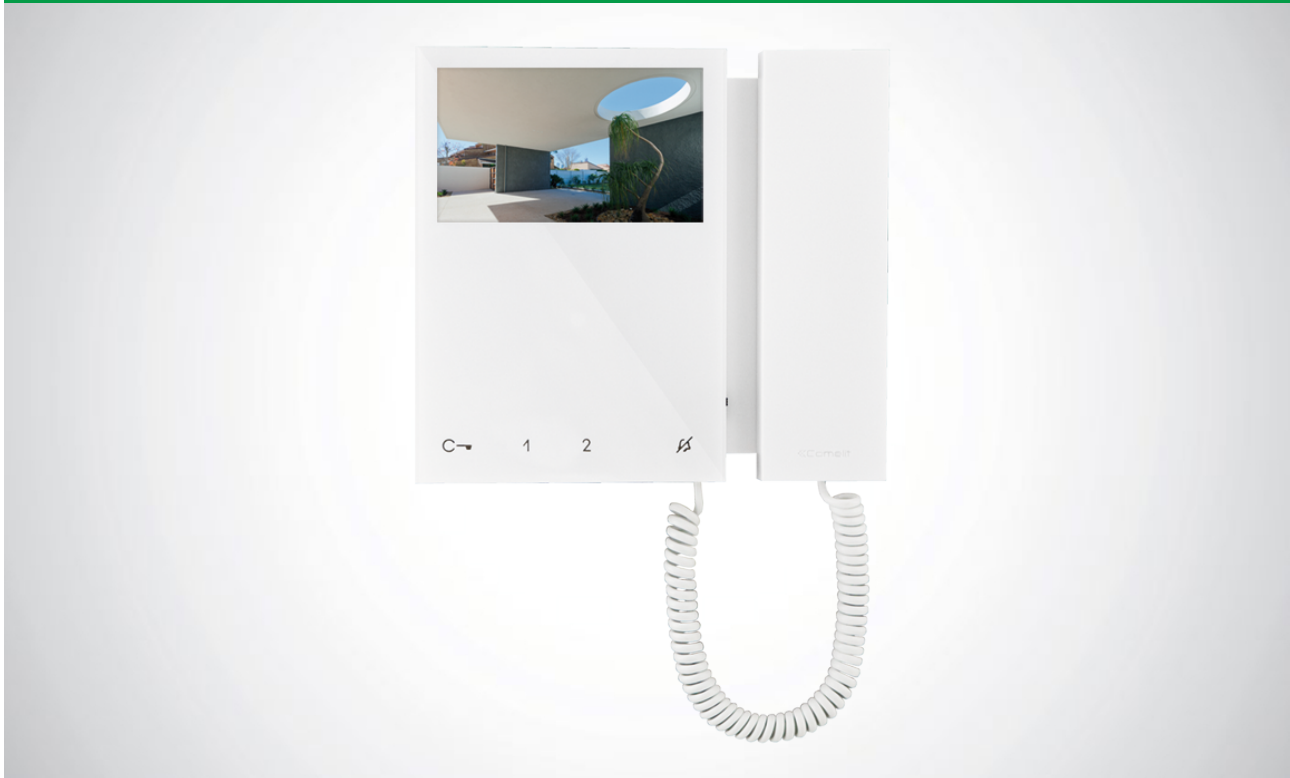




6701W

MINI MONITOR, SBTOP



Wall-mounted colour monitor with 4.3" 16/9 screen and handset. Allows brightness and contrast control, plus adjustment of the volume of the ringtone, which can be customised with a choice of different melodies. Equipped as standard with 4 soft touch buttons for door-opening, self-ignition, switchboard call and privacy service functions and with door status indicator LEDs. Manages floor door calls as standard. Option of adding 4 additional buttons with accessory Art. 6733W. Complete with 2 x 8-position DIP-switches for user code programming and button programming. Includes wall-mounting or residential series box backplate and riser distribution terminal Art. 1214/2C. The monitor can only be used in 2-wire SimplebusTop Color systems. Dimensions: 175x160x22mm.

AWARDS

DESIGN
MILANO





6701W

MINI MONITOR, SBTOP

MAIN FEATURES

Wall-mounted:	Yes
Desk base-mounted:	Yes
Type of display:	LCD
Display size (inch):	4,3" 16:9
Display resolution HxV (inch):	480x272
B/W or colour display:	Color
Product colour:	White
Sensitive Touch technology:	Yes
Total buttons:	4
Additional buttons:	4
LED signaling (no.):	2

FUNCTIONS

Actuator control function:	Yes
Self-ignition:	Yes
Switchboard call function:	Yes
Priority calls:	Yes
Intercom function:	Yes
Selective intercom call:	Yes
Call to multiple addresses:	Yes
Privacy function:	Yes
Doctor:	Yes
Floor door call function:	Yes
Electronic bell:	Yes
Customisable ringtone:	Yes
Privacy conversation function:	Yes
Key button function:	Yes

HARDWARE SPECIFICATIONS

Removable terminals:	Yes
----------------------	-----

SETTINGS

Ringtone volume control:	Yes
Display brightness control:	Yes
Display colour control:	Yes

GENERAL DATA

Product height (inch):	6.89
------------------------	------



6701W

MINI MONITOR, SBTOP

GENERAL DATA

Product width (inch):	6.3
Product depth (inch):	0.87

COMPATIBILITY

Simplebus Top audio/video system:	Yes
Building Kit audio/video system:	Yes
Kit audio/video system:	Yes

TECHNICAL CHARACTERISTICS

Power supply voltage:	0 ÷ 22
Maximum current absorption (mA):	200
IP protection rating:	IP30
Operating temperature (°F):	41 ÷ 104
RH max operating humidity (%):	25 ÷ 75
Video encoding:	PAL/NTSC
Product weight (oz):	1.43
Clamps:	L L CFP1 CFP2



6701W

MINI MONITOR, SBTOP

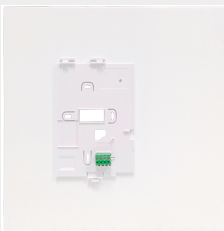
ACCESSORIES



6710

BACKPLATE AND DISTRIBUTION TERMINAL FOR MINI MONITOR

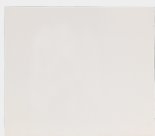
Wall-mounting or residential series box backplate for MINI monitor, /BM versions with handset featuring magnetic induction for hearing aid wearers. Also includes riser distribution terminal Art. 1214/2C. Dimensions 145x100x4 mm.



6711W

ADAPTER PLAQUE FOR MINI MONITOR W/ HANDSET. WHITE.

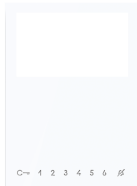
Mounting accessory for Mini Monitor when replacing Magis or Genius door entry monitors. Complete with backplate art. 6710 and distribution terminal art. 1214/2C. White. Dimensions: 300x260x4 mm.



6711WS

MINI HANDSET SMALL ADAPTER PLAQUE

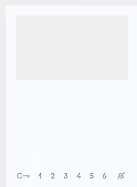
Mounting accessory for Mini Monitor when replacing Magis or Genius door entry monitors. White. Dimensions: 230x220x4 mm.



6733W

ADDITIONAL BUTTONS KIT FOR MINI MONITOR, WHITE

Accessory for transforming MINI monitors Art 6700W-/BM and 6701W-/BM into versions with 8 buttons. Includes an 8-button faceplate and an electronic module for activating the buttons, which can be installed quickly without opening up the monitor.



6735W

Add.butt. kit for Mini monitor w/handset, VIP

Accessory for conversion of Mini ViP series monitors Art 6702W into 7-button versions. Includes a 7-button faceplate and an electronic module for button activation, which can be installed quickly without the need to open the monitor casing.



6719W

BRCKT FOR ROUTING EXT. CABLES. MINI MON. W/HANDSET

Wall support bracket for Mini monitor with handset allowing thru-routing of external cables. Dimensions: 164x149.60x19mm.



6701W

MINI MONITOR, SBTOP

ACCESSORIES

6719V EXT. CABLE ROUTING BRACKET FOR VIP MINI W/ HANDSET
Wall bracket for ViP system Mini monitor with handset; allows through-routing of external cables.

6712V Desk base for Mini ViP monitor with handset
Desk base for desktop conversion of ViP system Mini monitor with handset. Complete with 1 x 2 metre cable with RJ45 connector to connect monitor terminals to the coupler or residential series socket.



6712 DESK BASE FOR MINI MONITOR
Desk base converts the MINI monitor into a desktop version. Complete with 1 x 2 m labelled RJ45 cable for connecting the monitor terminals to the clasp or to a residential series jack. Dimensions: 145x190x120 mm.

6712A Desk base for Mini Sbc monitor with handset
Desk base installation accessory for Mini monitor with handset in Simplebus Top system.