



6601W

ICONA MONITOR, SBTOP



Flush-mounted (in box Art. 6117) or wall-mounted (with bracket Art. 6620) colour monitor with 4.3" 16/9 screen, Full-Duplex hands-free audio and touch-sensitive controls. Allows adjustment of brightness level, contrast, audio volume and ringtone volume. Ringtones can be customised by selecting from the various melodies provided. Fitted as standard with a key button, enable/disable audio button with corresponding indicator LEDs and a further 7 programmable buttons for self-ignition, privacy service and other programmable functions. It is normally used for floor door call and call repetition management, and comes complete with 2 x 8-position DIP SWITCHES for user code programming and button programming. Equipped with riser distribution terminal Art. 1214/2C. The monitor can only be used in 2-wire SimplebusTop Colour systems. Dimensions 142.5x147x23 mm.

AWARDS





6601W

ICONA MONITOR, SBTOP

MAIN FEATURES

| | |
|---|---------------|
| Audio system: | No |
| Audio/video system: | Yes |
| Flush-mounted: | Yes |
| Wall-mounted: | Yes |
| Desk base-mounted: | Yes |
| Hands-free function: | Yes |
| Induction loop function: | No |
| Type of display: | LCD |
| Display size (inch): | 4,3" 16:9 |
| Touch screen display: | No |
| Display resolution HxV (inch): | 480x272 |
| B/W or colour display: | Color |
| Product colour: | White RAL9003 |
| Sensitive Touch technology: | Yes |
| Total buttons: | 9 |
| Comaptibility with Video Entry Comelit App: | No |

FUNCTIONS

| | |
|--------------------------------|-----|
| Actuator control function: | Yes |
| Self-ignition: | Yes |
| Switchboard call function: | Yes |
| Priority calls: | Yes |
| Intercom function: | Yes |
| Selective intercom call: | Yes |
| Call to multiple addresses: | Yes |
| Call to group addresses: | Yes |
| Call forwarding: | Yes |
| Privacy function: | Yes |
| Doctor: | Yes |
| Redial: | Yes |
| Floor door call function: | Yes |
| Electronic bell: | Yes |
| Customisable ringtone: | Yes |
| Privacy conversation function: | Yes |
| Key button function: | Yes |

HARDWARE SPECIFICATIONS

| | |
|----------------------|-----|
| Removable terminals: | Yes |
|----------------------|-----|



6601W

ICONA MONITOR, SBTOP

HARDWARE SPECIFICATIONS

| | |
|-----------------|---------|
| Type of finish: | Plastic |
|-----------------|---------|

SETTINGS

| | |
|-----------------------------|-----|
| Loudspeaker volume control: | Yes |
| Microphone volume control: | Yes |
| Ringtone volume control: | Yes |
| Display brightness control: | Yes |
| Display contrast control: | Yes |

GENERAL DATA

| | |
|------------------------|------|
| Product height (inch): | 5.73 |
| Product width (inch): | 5.61 |
| Product depth (inch): | 0.47 |

COMPATIBILITY

| | |
|-----------------------------------|-----|
| Simplebus Top audio/video system: | Yes |
| Building Kit audio/video system: | Yes |
| Kit audio/video system: | Yes |

TECHNICAL CHARACTERISTICS

| | |
|----------------------------------|------------------------------|
| Power supply voltage: | 22 ÷ 28 |
| Maximum current absorption (mA): | 400 |
| IP protection rating: | IP30 |
| Operating temperature (°F): | 23 ÷ 104 |
| RH max operating humidity (%): | 25 ÷ 75 |
| Product weight (oz): | 1.54 |
| Clamps: | L L -+CFP1 CFP2 S+S- IN1 IN2 |



6601W

ICONA MONITOR, SBTOP

ACCESSORIES



6117

PLANUX, SMART, ICONA FLUSH BACKBOX

Flush mounted box for Planux, Smart and Icona monitors Dimensions: 132x132x50mm



6118

PLANUX CLIPS FOR DRY LINED WALLS

Installation kit for plasterboard walls.



6617

FLUSH-MOUNTED BOX FOR PLASTERBOARD. ICONA.

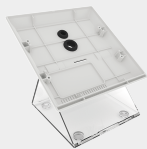
Flush-mount box allowing mounting of Icona series monitors on plasterboard and/or cement walls. Dimensions: 129x129x50 mm



6620

WALL BRACKET FOR ICONA MONITOR

Wall bracket for Icona monitor. Colour: White. Dimensions: 137X142X12.5 mm.



6612A

DESK BASE FOR ICONA MONITOR

Desk base installation accessory for Icona monitor.