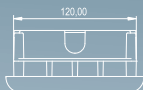


2 push buttons panel
Posto esterno a 2 pulsanti

Flush
Incasso

Surface
Superficice



VR4KV-1S

VR4KV SERIES VIDEOKIT



The VR4KV is a new range of vandal resistant videokits. Developed from the popular VK4K videokit, the VR4KV offers a number of operating features and allows greater flexibility for installation. The face plate is manufactured from 2.5 mm stainless steel.

- Up to 4 outdoor stations (video or audio only) with 2 call push buttons calling 2 independent apartments;
- Up to 3 peripheral devices connected in parallel to each videophone (additional videophone, extension sounder, telephone handset etc.);
- Disable Friendly - Acoustic & Visual signalling of the system status (conversation in progress and door open signalling);
- Recall (selective entrance recall on systems with 2 or more outdoor stations);
- Intercommunication between internal videophones;
- Local call tone which is different from the external push button call tone;
- Videophone incorporates "Privacy" On/Off facility (with either latched or timed activation of privacy);
- Programmable Call, conversation and door opening times;
- Dry relay contacts for electric lock;
- Power supply can be connected to the videophone or the outdoor station.

VR4KV-1

One button videokit comprising of:

1 Outdoor station including speaker unit module Art.VR4KAMK-1 and camera module Art.VR4KCMC comprising of high quality auto iris lens CCD B&W camera and infrared illumination LEDs plus two module flush mounting box with module support and hinge Art.4852. Standard finish: brushed stainless steel for the front plate and gun metal grey for the module support.

1 Art.3356 3000 Series Videophone with 4" B&W flat screen monitor, "door open" and "camera recall" push buttons, "Privacy on" button, 2 "service" push buttons, "door open" and "privacy on" LEDs and electronic call tone with 3 level adjustable volume. Complete with wall mount support Art.3980.

1 Art.850K Power transformer in a Type A 5 module DIN box.

Packing: Cardboard 12x45x43 cm total weight 5,9 Kg

CVR4KV-1

As VR4KV but with 3.5" colour TFT flat monitor Art.3456 and colour camera module Art.VR4KCMC.

VR4KV-2, CVR4KV-2

As VR4KV-1, CVR4KV-1 but two call button speaker unit Art.VR4KAMK-2, 2 videophones (Art.3356 or 3456), 2 power transformers Art.850K and one video distributor Art.316.

Packing: Cardboard 26x29x25 cm total weight 8.1 Kg.

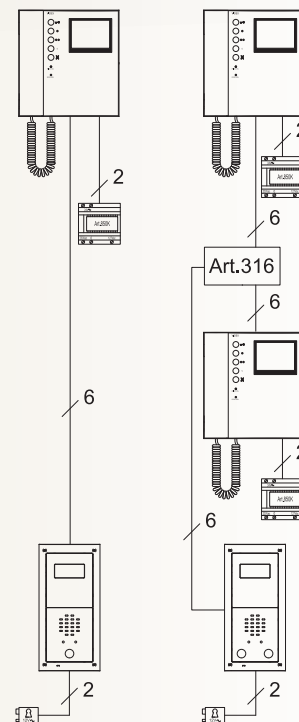
VR4KV-S, CVR4KV-S, VR4KV-2S, CVR4KV-2S

As the flush mount versions but with surface mounting box (Art.4882).

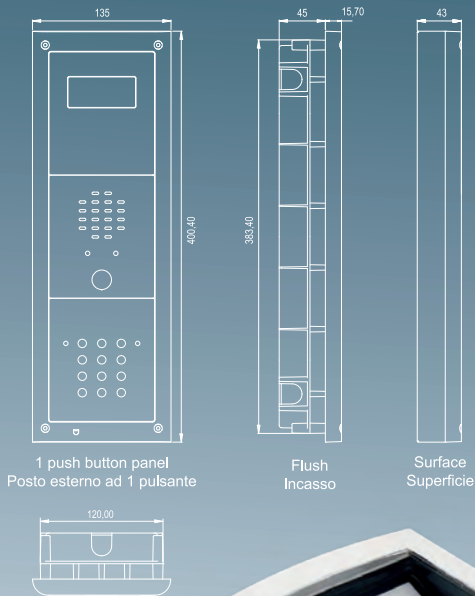
Packing: the same as relevant flush model with total weight 6.2 Kg for one button version and 8.4 Kg for two button version.

The module support frame and the videophone are available in other finishes, **see pictures 6 and 7 on page 29** for available versions and additional suffix to use for orders.

The above colour kits can be ordered with Art.SL5456 or Art. 3656 video intercoms, **see page 30** to check their features, code, photos and dimensions.



VR4KV-1S/CL



VR4KV/CL SERIES VIDEOKIT



With the addition of a VIDEX stand-alone digital codelock module Art.VR4KCLM added to the large number of features offered by the VR4KV videokit. The user can open the door from the outside by entering an access code through the keypad.

VR4KV-1/CL

One button videokit comprised of:

1 Outdoor station including one speaker unit module Art.VR4KAMK-1, camera module Art.VR4KCMC comprised of high quality auto iris lens CCD B&W camera and infrared illumination LEDs plus one codelock module Art.VR4KCLM (2 codes / 2 relays) and a three modules flush mounting box with module support and hinge (Art.4853). Standard finish: brushed stainless steel for the front plate and gun metal grey for the module support.

1 Art.3356 3000 Series Videophone with 4" B&W flat screen monitor, "door open" and "camera recall" push buttons, "Privacy on" button, 2 "service" push buttons, "door open" and "privacy on" LEDs and electronic call tone with adjustable volume on 3 levels. Complete with wall mount support Art.3980.

1 Art.850K Power transformer in a Type A 5 module DIN box.

Packing: Cardboard 54x17x24cm total weight 6.7 Kg.

CVR4KV-1/CL

As VR4KV-1/CL but with 3.5" colour TFT flat monitor Art.3456 and camera module with colour camera Art.VR4KCMC.

VR4KV-2/CL, CVR4KV-2/CL

As VR4KV-1/CL, CVR4KV-1/CL but with two call button version speaker unit module Art.VR4KAMK-2, 2 videophones (Art.3356 or 3456), 2 power transformers Art.850K and one video distributor Art.316.

Packing: Cardboard 54x17x24 cm total weight 8.9 Kg.

VR4KV-1S/CL, CVR4KV-1S/CL, VR4KV-2S/CL, CVR4KV-2S/CL,

As the flush mount versions but with surface mounting box Art.4883.

Packing: the same as flush models but with total weight of 7.2 Kg for one button version and 9.4 Kg for two button version.

The module support frame and the videophone are available in other finishes, **see pictures 6 and 7 on page 29** for available versions and additional suffix to use for orders.

The above colour kits can be ordered with Art.SL5456 or Art. 3656 video intercoms, **see page 30** to check their features, code, photos and dimensions.

