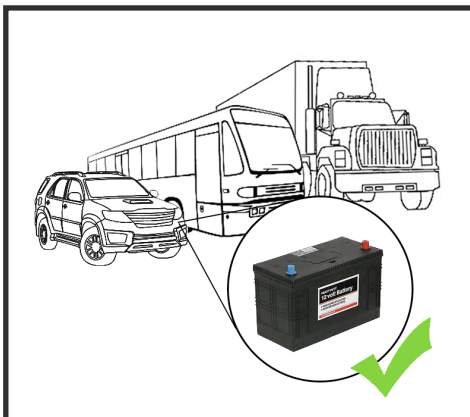
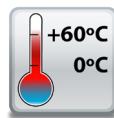


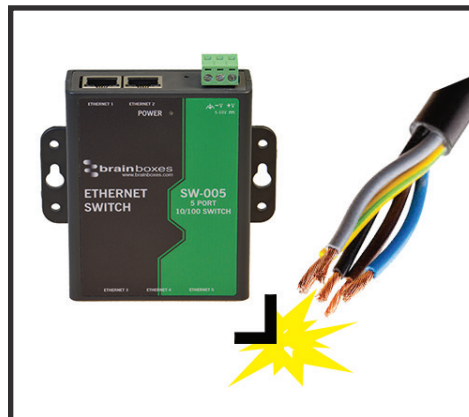
SW-005 5 Port Ethernet Switch 10/100

5 Port Unmanaged Ethernet Switch Wall Mountable

- 5 Port 10/100 Mbs Ethernet Switch
- Power inputs: +5V to +30V DC
- Compact design with integral wall mount
- No software required - Simply plug in and connect
- Integral wall mount or optional DIN rail mount
- Connection speed and activity LEDs on each Port



+5 to +30 Volt Power Input enables the device to be run from a standard car battery - ideal for in vehicle applications



Non conducting polyamide casing prevents electrical conduction - for safer installation



Integral wall mount option can be used with MK-048 clips to allow DIN rail mounting



SW-005

5 Port Ethernet Switch 10/100

No software needed: Simply plug in any ethernet cable

All Ethernet ports are Auto MDI/MDIX supporting straight through or crossover Ethernet cables

Automatic detection of data transmission speed: 10 or 100 MBps
 2k Byte maximum packet size – improves the efficiency of bulk data transfer and system performance

Broadcast Storm protection



Easy Wire Removable screw terminal block

Wide Range Input Power: +5VDC to +30VDC

Power consumption is optimised based on the status of the link device

Wall mount holes compatible with MK-048 DIN mount clips

IP30 Non-conducting polyamide case

0°C to +60°C/+32°F to +140°F temperature range

Connectors

Screw Terminals	3 way x 0.2inch/5.08mm pitch power supply
Wire Thickness	0.150 inch, 3.81mm, 20 pins, 12+8 screw terminals, #26 - #16 AWG, 0.14mm ² -1.3mm ²

Power Supply

Power Consumption	1.1 Watts Max : 220 mAmps@+5VDC/36mAmps@+30VDC
Power Supply input	Unregulated +5V to +30Volts DC, reverse polarity protection
Isolation	1500VRMS Magnetic isolation from Ethernet

Environmental

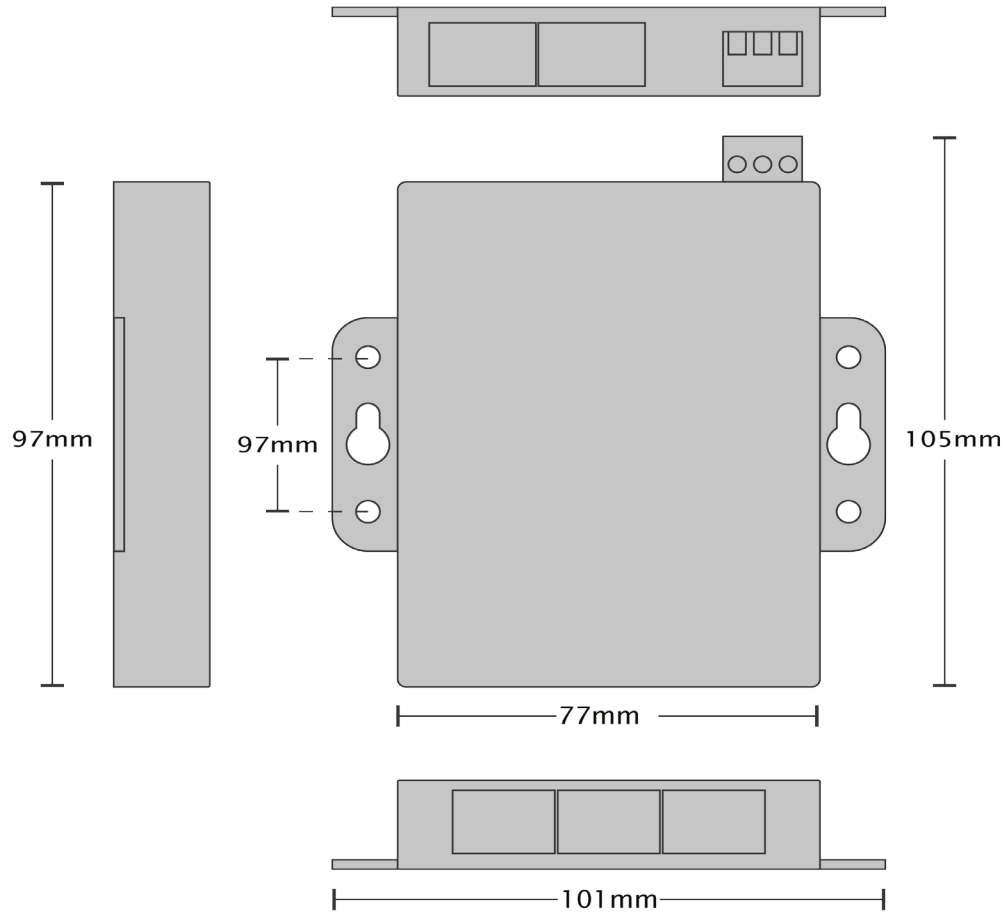
Operating Temperature	0°C to +60°C / +32°F to +140°F
Storage Temperature	0°C to +70°C / +32°F to +158°F
Ambient Relative Humidity	5 to 95% (non-condensing)

Magjack LED Information

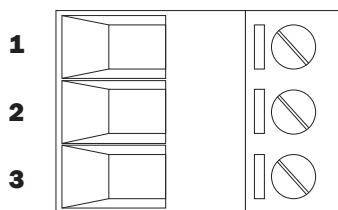
Link/Activity LED	Solid green	Connection established
	Flashing Green	Data communication
Speed LED	Green	100Base-Tx
	Unlit	10Base-T

Ethernet

Ethernet Port	5 x RJ45 jack, 10/100Mhz autosensing, crossover auto sensing (Auto MDIX)
Protection	1,500 Volts magnetic isolation between ports
Housing	IP-30 rated non-conducting polyamide case

SW-005
5 Port Ethernet Switch 10/100

Power Terminal Pin Outs

PIN	FUNCTION
1	+V Power
2	-V Power
3	Functional Earth


Ethernet Ports x4 Pin Outs

PIN	FUNCTION
1	RD+ / TD+
2	RD- / TD-
3	TD+ / RD+
4	NC
5	NC
6	TD- / RD-
7	NC
8	NC

Lifetime Warranty and Support:

We can help with every aspect of your project, from getting you up and running to custom application.

SW-005

5 Port Ethernet Switch 10/100

Packaging Information

Packaging	Quick Start Guide
Device	Ethernet Switch 5 port
Packaged Weight	0.221 kg, 7.79 ounces
Packaged Dims	160x135x49 mm, 6.3x5.3x1.9 inches
GTIN Universal Code	837324009866

Approvals

Industry Approvals	Microsoft Certified Gold Partner, WEEE, RoHS, AEO (C-TPAT), CE
--------------------	--

Product Support

Warranty	Lifetime - online registration required
Support	Lifetime Web, Email and Phone Support from fully qualified, friendly staff who work in and alongside the Product Development Team

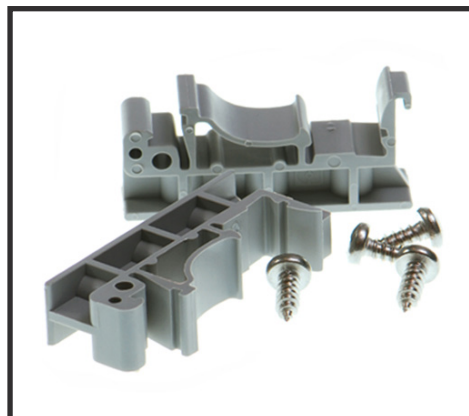
Additional Information

OEM option	Available for bulk buy OEM
Made In	Manufactured in the UK by Brainboxes Winner 2005 European Electronics Industry Awards 'Manufacturer of the Year'
Customisable	Brainboxes operate a 'Perfect Fit Custom Design' policy for volume users. More info:sales@brainboxes.com



PW-600

Power supply with connectors for UK, USA, EU and AUS mains socket. 'Tails' are suitable for connecting to screw terminal blocks.



MK-048

DIN Rail Mounting Kit Suitable for attaching to SW-005 to make device clip on to a DIN rail.



SW Range

Switch products available in a range of formats and specifications.

www.brainboxes.com