

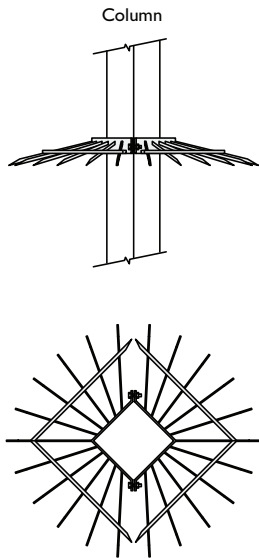
# → Pole & Tower Accessories

## Anti Climb Guards

● Stock items

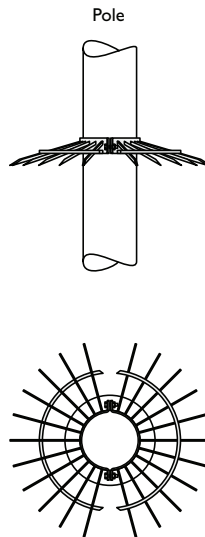
### ● SGC/SGP

Followed by column or wall mounted pole type  
e.g. for ACCIFB = SGC1 / For ACP2 = SGP2



### ● SGC (Ø\*)

Followed by \* pole diameter  
e.g. for Ø139 pole = SGC/139

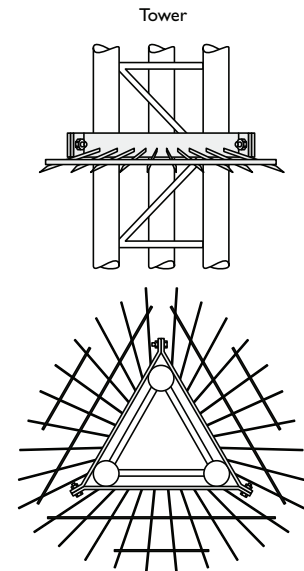


Available  
for pole  
diameters

Ø76  
Ø89  
Ø114  
Ø139  
Ø168  
Ø193  
Ø219  
Ø273

### ● SGT

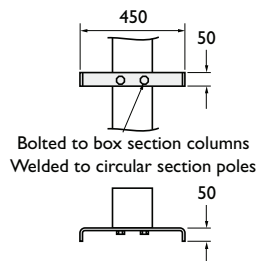
Followed by tower type  
e.g. for ACT2BP = SGT/2



## Ladder Stays

### ● LSI

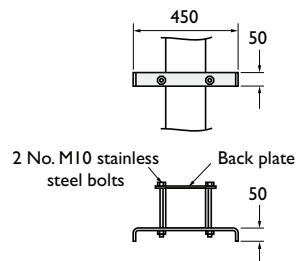
Purchased with pole or column



Bolted to box section columns  
Welded to circular section poles

### ● LSI/C

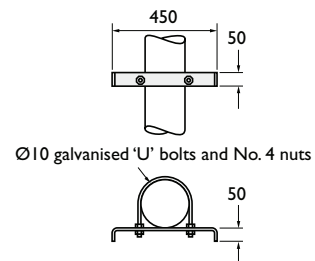
Retro fit for box section columns  
Followed by column type or size  
e.g. LSI/C/ACCIFB



2 No. M10 stainless  
steel bolts Back plate

### ● LSI/P

Retro fit for tubular pole  
Followed by pole diameter  
e.g. LSI/P139

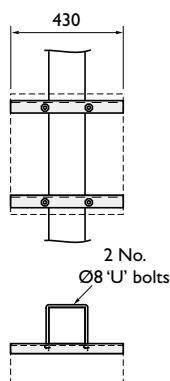


Ø10 galvanised 'U' bolts and No. 4 nuts

## Adjustable Telemetry Receiver Brackets

### ● ATBC/ATBP

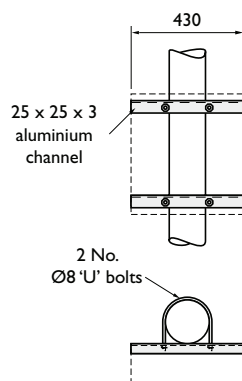
Followed by column type or size. ATBC for  
column. ATBP for wall mounted pole  
e.g. ATBC/1



2 No.  
Ø8 'U' bolts

### ● ATBC

Followed by  
pole diameter  
e.g. ATBC/139

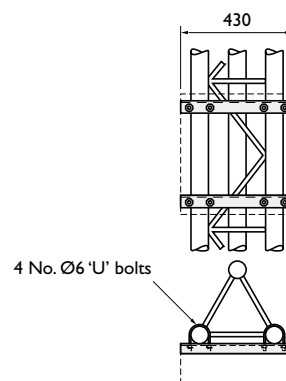


25 x 25 x 3  
aluminium  
channel

2 No.  
Ø8 'U' bolts

### ● ATBT

Followed by  
tower type  
e.g. ATBT/2



4 No. Ø6 'U' bolts

Fitting adjustable telemetry  
receiver bracket

1. Drill aluminium channels to fit  
hole centre on receiver box  
(one channel across the  
bottom, one across the top)
2. Bolt channels to the box
3. Trim channels to the width of  
the box using hacksaw
4. Bolt the box to the column/  
pole/tower using the 'U' bolts  
supplied