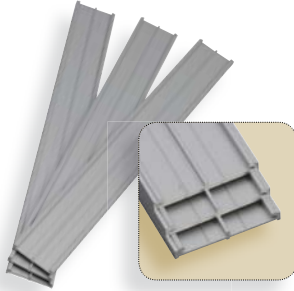




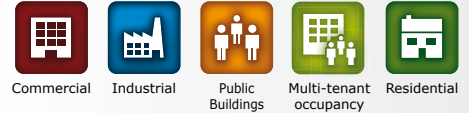
## RETROFIT HOUSING AND HANDLE ACCESSORIES

► ESSENTIAL ACCESSORIES TO OPTIMIZE YOUR SITE

### REO Aluminium rail spacer



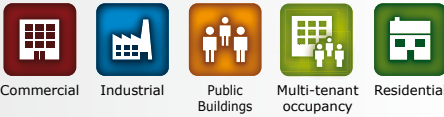
- **Stackable.**
- **Aluminium rail spacer for:**
  - BO600RH horizontal retrofit housing,
  - BO600RP vertical retrofit housing,
  - P300RP and P600RP handles.
- Dimensions (L x W x D): 2500 x 43 x 5mm.
- Material: SAA finish\*\*.



CODE	REFERENCE	DESCRIPTION
F0519000085	REO	ALUMINIUM RAIL SPACER

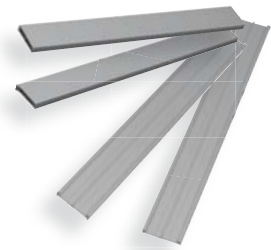
### 2 Aluminium cable trays + 2 aluminium rail spacer kits

### REOMA



- **2 aluminium cable tray (ALMA) + 2 aluminium rail spacer (REO) kits.**

- Dimensions (L x W x D):
  - REOMA60 = 600 x 43 x 5mm (P300RP & P600RP),
  - REOMA = 2500 x 43 x 5mm (BO600RP & BO600RH).
- Material: Aluminium.
- Option: RAL (On request).

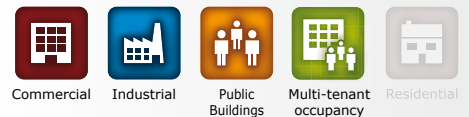


CODE	REFERENCE	DESCRIPTION
F0519000111	REOMA60	600MM 2 ALUMINIUM CABLE TRAYS + 2 ALUMINIUM RAIL SPACER KITS
F0519000105	REOMA	2500MM 2 ALUMINIUM CABLE TRAYS + 2 ALUMINIUM RAIL SPACER KITS
F0519000017	RAL	RAL COLOUR OPTION

### CABB Extension cable for retrofit housing (2 electromagnetic locks)



- **Extension cable with terminal block with or without monitoring.**
- **Compatible with all Diax® retrofit housing range.**
- Length: 2000mm.



CODE	REFERENCE	DESCRIPTION
F0534000029	CABB	2 ELECTROMAGNETIC LOCKS EXTENSION CABLE FOR RETROFIT HOUSINGS

\* Refer to Limited Lifetime Warranty Conditions.  
 \*\* Satin Anodised Aluminium Finish.