

PORTAL PLUS ACCESSORIES

RB0408 LIFT INTERFACE RELAY UNIT

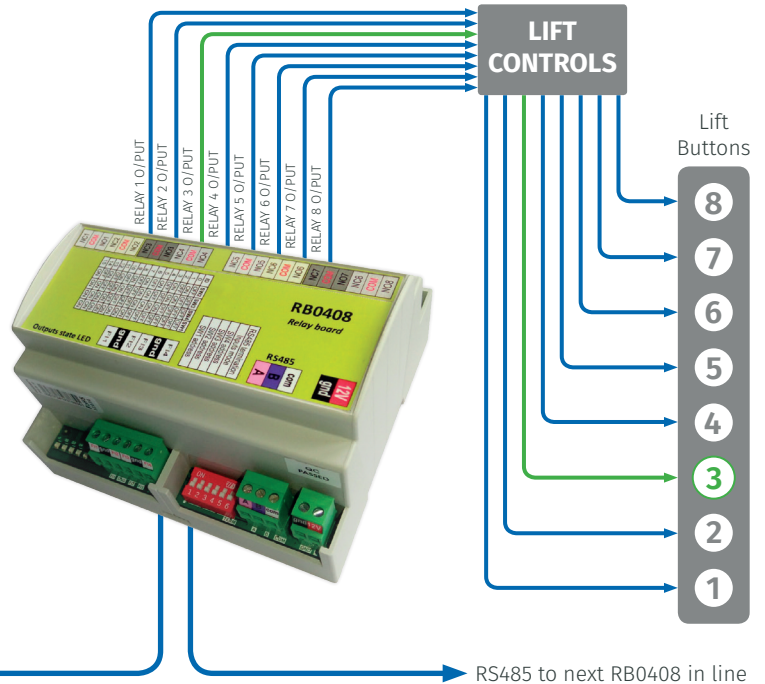
PROS CS SOFTWARE



PPCU2 CABINET
(EWSi Controller)



Finger Print Reader
(DINBIOCS)



Program and
configure the
RB0408 interface
relay using the
PROS CS software.



ACCESS
CONTROL



PC
SOFTWARE

The RB0408 is a lift interface relay unit which has been designed to work with the Portal Plus access control system (EWSi controller).

Once connected to the lift controls it enables the lift to be called while also restricting the use of the lift to users who are programmed on the access control system. It can then be used to either enable the lift buttons or allow direct floor selection. Users of the access control system can use either an access code, proximity fob/card or their finger print to call the lift.

It can be connected directly to lift controls through a series of 8 relay outputs allowing control of up to 8 floors (1 relay per floor). A maximum of four RB0408 lift interface units can be connected to one Portal Plus EWSi controller enabling control of up to 32 floors.

The RB0408 also includes LED indication for each relay output a useful feature for the engineer to show which floors have access when a user operates a reader. Also included are four inputs to enable/disable and override the lift control if required.

The RB0408 lift interface is simple to connect and setup utilising an RS485 bus to connect to the Portal Plus EWSi controller and includes dip switches to address the unit. It can be directly wall mounted or mounted on a DIN rail.

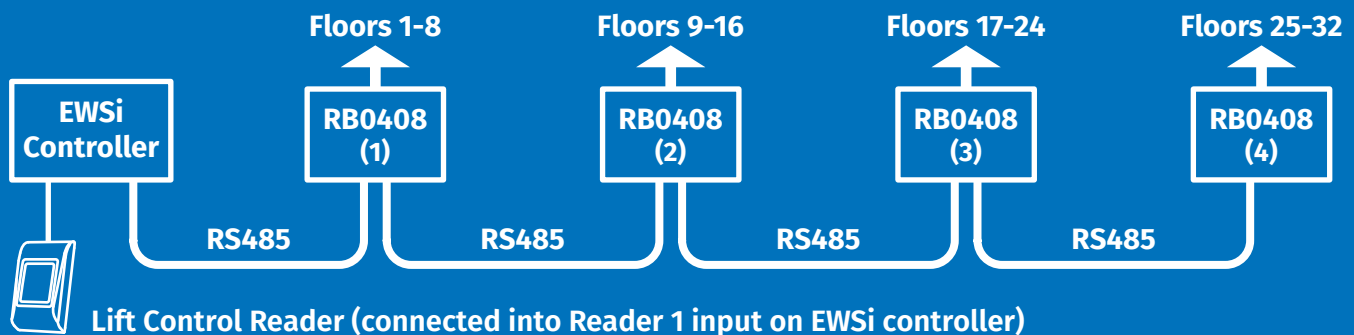
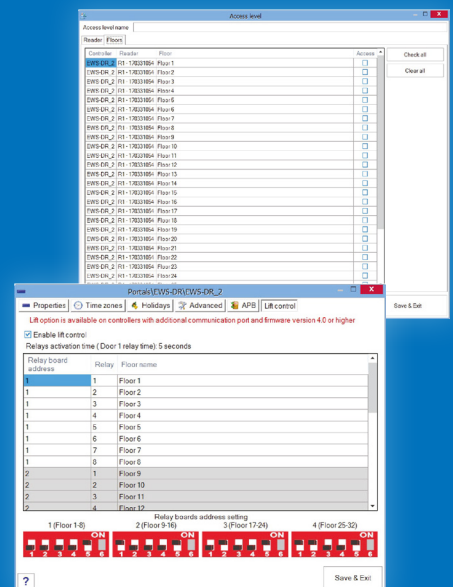


www.videxuk.com

Programming is carried out using the Portal Plus Pros CS management software where the lift control integrates seamlessly into user access level programming, enabling each user to be independently programmed to enable access to one or more floors based on their access rights and time restricted access.

Part No.	System	Description
RB0408	Portal Plus	Portal Plus Lift Interface Relay Unit (107 x 90 x 61 mm)
PPCU2		2 Door Portal Plus (Wiegand) Proximity Access Control Cabinet (1x 12Vdc 3.5A psu, 1x EWSi Controller inc. PROS CS software)
MTPXS-EH	Portal Plus Accessories*	Surface, Portal Plus Wiegand (26 bit) Proximity Reader (silver)
MTPXS-MF		Surface, Portal Plus Mifare Proximity Reader (silver)
BIOCS		Surface, Portal Plus Finger Print Reader (silver)
MTPADS-M		Surface, Portal Plus Wiegand (26 bit) Keypad (silver)
PROX-USB		Wiegand/Mifare desktop USB programming proximity reader

(* For other options not listed above and accessories including proximity fobs/cards, Proximity Readers, Finger Print Readers and Keypad variations please contact Videx sales)



Key Features:

- Programming and lift mode configuration using Portal Plus PC software (PROS CS);
- Floor access management via Access Level options using PROS CS software;
- Connection to lift controller (enabling the lift buttons or direct floor selection);
- Unlimited EWSi (PPCU2) controllers in lift mode per site;
- Up to 4 RB0408 relay units max. per EWSi (PPCU2) controller (32 floors max.);
- RS485 bus connection between lift interface units;
- Lift access controlled by either an access code (keypad), proximity fob/card reader or by a finger print reader connected via the Portal Plus EWSi (PPCU2) controller.

Technical Specification:

- Input power: 12Vdc;
- Current consumption: 280mA (max.);
- Inputs: 4 digital inputs (0V / 3.3Vdc);
- Relays: 8 relay outputs (150Vac / 2A max.), 1 relay per floor;
- Indication LED's: 8 (1 LED per relay);
- Communication: RS485 (between EWSi controller and RB0408 lift interface units);
- Operating temperature range: 0° to 45°C;
- Operating humidity range: 0 - 80% (non-condensing);
- Unit mounting: Directly to the wall or using DIN rail;
- Unit dimensions (mm): 107 (L) x 90 (D) x 61 (H).

Southern Office

1 Osprey, Trinity Park,
Trinity Way, London,
E4 8TD
T 0870 300 1240 • F 020 8523 5825

Northern Office

Unit 4-7 Chillingham Ind. Estate,
Chapman Street,
Newcastle Upon Tyne, NE6 2XX
T 0870 300 1240 • F 0191 224 1559



sales@videxuk.com • www.videxuk.com

