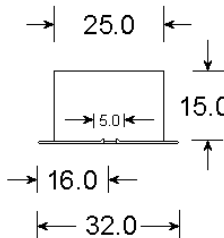
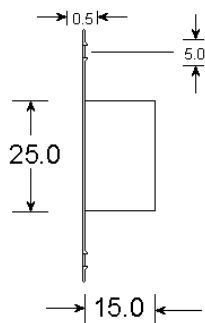
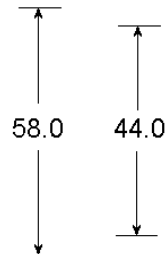
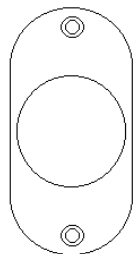


Magnet



1/. Reed (Ser. Parallel)	2/. EOL (Series)
1KR	1KR
2K2	2K2
4K7	4K7
4K7	2K2
4K7	6K8
8K2	8K2
See separate Sheet	



Description:
Grade 2 Class III
6 Terminal Flush Contact Double
Reed 6 Core with Pre-set, pre-fitted
resistors.

Operating Gap:
25-30mm (Approx)

Materials:
High Impact Polystyrene
Stainless Steel Plate

Magnet:
Ferrite or Alnico V

Contact Material:
Rhodium

Voltage Range:
1 – 100v DC
125v AC Max

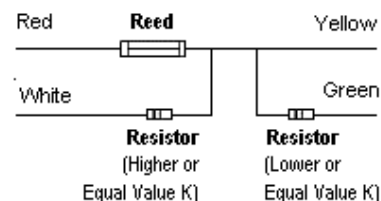
Switching Current
500mA Max DC
500mA Max AC

Temperature Range:
-40°C to +50°C

Colours:
White (No Suffix)
Brown (Suffix B)
Fixing Screws Provided

Sealed against outside attack.

Can be used with just the reed switch and no resistors – connect the yellow wire and the red wire.
To include 1 resistor, twist the red & white wires together to link, then connect the yellow wire.
To include 2 resistors, twist the red & white wires together to link then connect the green wire.
Black and blue wires are the tamper loop.
The magnet side needs to be fitted 25-30mm away from the reed side.



KNIGHT

FIRE & SECURITY PRODUCTS LTD

<mailto:info@knightfireandsecurity.com>

Unit 84 Seawall Road Ind. Estate
Cardiff UK CF24 5TH

Tel: 0 (00 44) 29 20 48 81 29

Fax: 0 (00 44) 29 20 48 91 32

Drawing No: PDA90

Drawn: Chris Moorman

Date: 04/09/09

All dimensions in mm
Do not scale



The portrayed information is © Knight Plastics Ltd
All cases of TM Infringement will be persued.