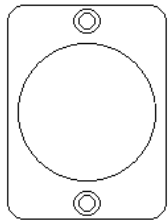
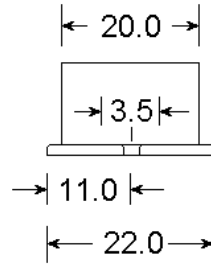
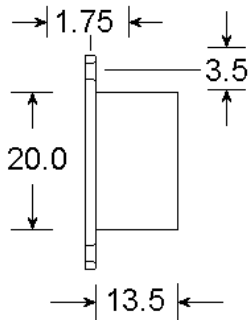


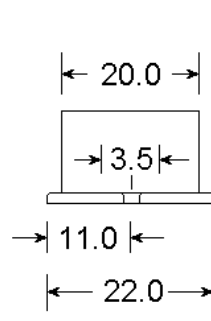
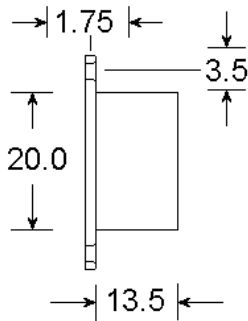
36.0

27.0



36.0

27.0



Magnet

| 1/. Reed | 2/. EOL |
|--------------------|----------|
| (Ser. Parallel) | (Series) |
| 1KR | 1KR |
| 2K2 | 2K2 |
| 4K7 | 4K7 |
| 4K7 | 2K2 |
| 4K7 | 6K8 |
| 8K2 | 8K2 |
| See separate Sheet | |



Description:
Grade 2 Class III
5 Terminal Flush Contact Single Reed,
pre-fitted pre-set resistors.

Operating Gap:
14mm (Approx)

Materials:
High Impact Polystyrene

Magnet:
Ferrite or Alnico V

Contact Material:
Rhodium

Voltage Range:
1 – 100v DC
125v AC Max

Switching Current
500mA Max DC
500mA Max AC

Temperature Range:
-40°C - +50°C

Resistor Combinations:
See Inset Panel
Call for options.

Colours:
White (No Suffix)
Brown (Suffix B)

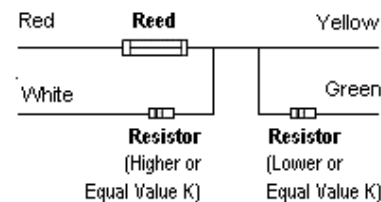
Fixing Screws Provided

Sealed against outside attack.

Can be used with just the reed switch and no resistors – connect the yellow wire and the red wire.

To include 1 resistor, twist the red & white wires together to link, then connect the yellow wire.
To include 2 resistors, twist the red & white wires together to link then connect the green wire.

Black and blue wires are the tamper loop.
The magnet side needs to be fitted approx. 14mm away from the reed side.



KNIGHT

FIRE & SECURITY PRODUCTS LTD

<mailto:info@knightfireandsecurity.com>

Unit 84 Seawall Road Ind. Estate
Cardiff UK CF24 5TH

Tel: 0 (00 44) 29 20 48 81 29

Fax: 0 (00 44) 29 20 48 91 32

Drawing No: PDA40 +RESISTORS

Drawn: Chris Moorman

Date: 04/02/09

All units in mm
Do not scale



© Knight Fire & Security Products Ltd
All cases of ™ Infringement will be pursued.