

Mini Fire-Cryer® Plus - EN 54-3 Approved Voice Sounder

The EN 54-3 approved Mini Fire-Cryer® Plus is a slimline base sounder for discreet mounting under fire detectors. It requires no special wiring and can be retrofitted to existing installations. It is fully synchronised and has an exceptionally low current consumption. The units can be used as a replacement for electronic sounders or bells to broadcast a clear message for any situation - evacuation, chemical spills, access message, security or general information. A cover plate is available for wall mounting.

Where staged alarm or phased evacuation is required the addition of the FC3/MMSP interface allows up to 7 different messages to be broadcast across multiple zones on just 2 wires.

Features

- Sound output - 90 dB(A)
- Ultra-Slim base sounder to fit industry-standard detectors
- Omni-directional sound output
- Choice of colour to match detectors
- Installer-friendly connections
- Suitable for ceiling or wall mounting
- Optional front plate for stand-alone use
- No special wiring, easily retro-fitted
- Fully synchronised over multi-zones
- 7 user-definable messages from a library of hundreds
- Approved to EN 54-3

Part Numbers

FC3/C/I: Colour - Ivory
 FC3/C/W: Colour - White



Accessories

FC3/MMSP: Multi Message Switching PCB
 FC3/ZEP: Zone Extension PCB
 (Can only be used with FC3/MMSP)
 FC3/EP2: Extinguishant Interface for use with Sigma XT Panels
 VMC/02/01/05: Voice Message Controller (Metal Enclosure
 c/w FC3/MMSP+FC3/ZEP+5.25A PSU)
 VMC/02/02/02: Voice Message Controller (Metal Enclosure
 c/w FC3/MMSP+2.5A PSU)



Vimpex Limited

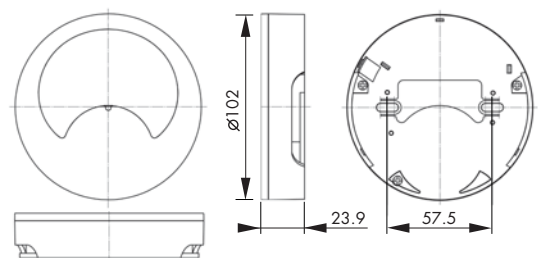
Star Lane, Great Wakering
 Essex SS3 0PJ England
 Tel: +44 (0) 1702 216999
 Fax: +44 (0) 1702 216699
 E-mail:sales@vimpex.co.uk
www.vimpex.co.uk



Specification

Operating Voltage:	20-28 V dc
Current @ 24 V dc, Peak/Avg:	27/20 mA
Effective Sound Output (Typical):	
- Alert Fast Sweep tone to BS5839	90 dB(A)
- Voice	86 dB(A)
Volume Adjustment from minimum output to maximum output -18dB(A):	72 to 90 dB(A)
Weatherproofing	Internal use only
Housing Material	ABS
Temperature Range	-10 °C to +55 °C
Colour	White or Ivory
Connections	Screw TB 1.5mm ²

Installation



Dimensions (mm)