



FE110US

Eco Line Maglock 150 Kgf, unmonitored, surface mount

Product Overview

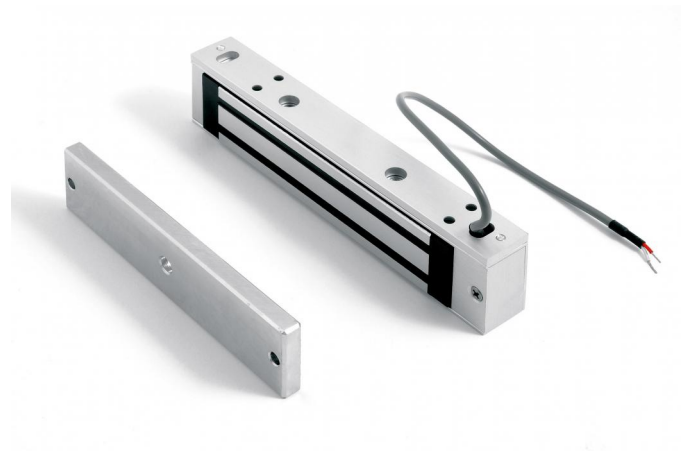
Eco Line mini magnetic lock. Surface mounting includes a quick mount bracket

Application

Internal non high security doors and security cabinets

Reliable security

This state of the art electro-magnetic locking device provides positive, instantaneous door control. Filler plates, angle brackets, and other mounting adapters are available to satisfy a wide range of door and frame types and conditions.



Details

- 150 Kgf holding force
- Not monitored
- No residual magnetism
- 12/24 V dc jumper selectable operation
- Mounts easily with a minimum of tools

FE110US

Eco Line Maglock 150 Kgf, unmonitored, surface mount

Technical specifications

General

Product type	Magnetic lock
--------------	---------------

Holding force

Holding force kgf (Kilogram force)	150 kgf
---------------------------------------	---------

Holding force N (Newton)	1500
--------------------------	------

Monitoring & status

Monitored	No
-----------	----

LED indicator	No
---------------	----

Door status switch	No
--------------------	----

Monitored changeover	No
----------------------	----

Magnetic bond sensor	No
----------------------	----

Electrical

Power supply value	12 / 24 VDC
--------------------	-------------

Current consumption	460 mA (+/- 2,5% @ 13,5 V)
---------------------	----------------------------

Physical

Physical dimensions	166 x 38 x 22 mm
---------------------	------------------

Colour	Aluminium
--------	-----------

