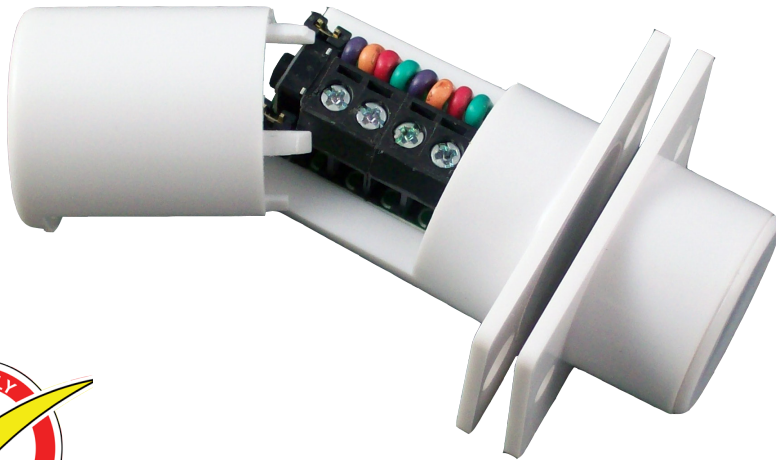


**FC508/WH or BR/MULTI/G3/EN**  
**FLUSH QUICK FIT DOOR CONTACT**

**GRADE 3  
 COMPLIANT**



- Screw terminal block, no junction box required
- Microswitch tamper
- Selectable end of line resistor
- Can use own resistors
- Available in white or brown
- Can be fitted in double pole systems
- Can be used on double door configuration
- Magnetic Immunity



**Specifications**

**FC508 Grade 3**

<i>Connections</i>	4 Terminals	<i>Voltage Range</i>	12Vdc
<i>Reed Switches</i>	0	<i>Switching Current</i>	500mA @ 12Vdc
<i>Pull-in Gap</i>	4mm	<i>Contact Material</i>	Silver plated copper
<i>Material</i>	High Impact Polystyrene	<i>Colours</i>	White or Brown
<i>Contact Size</i>	33 x 22 x 32mm	<i>Tamper</i>	Cover & RFMS
<i>Magnet Size</i>	33 x 22 x 13mm	<i>Magnetic Immunity</i>	Yes
<i>Contact Form</i>	SPST form A	<i>Standards</i>	EN50131-2-6 Grade 3
		<i>Environmental Class</i>	II



**Address:** CQR Fire & Security, 125 Pasture Road, Moreton, Wirral, CH46 4TH, UK.

**Contact us:**

**Phone:**

Tel: +44(0)151 6061000

Fax: +44(0)151 6061122

**Online:**

Web: [www.cqr.co.uk](http://www.cqr.co.uk)

Email: [info@cqr.co.uk](mailto:info@cqr.co.uk)

