

ACTpro e

Proximity and Keypad Readers



Introduction:

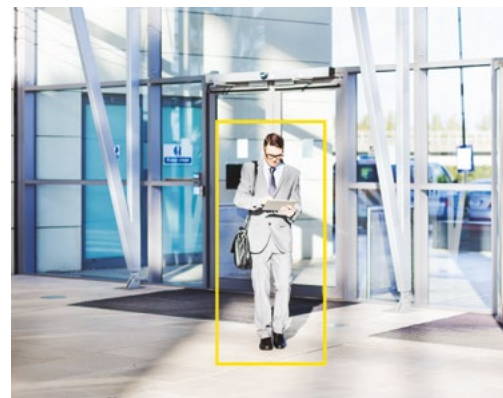
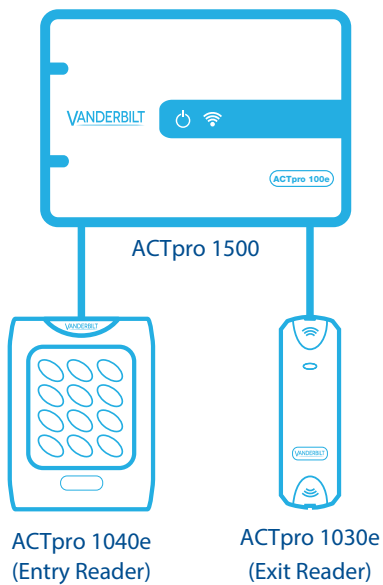
The ACTpro RFID readers are multiformat readers that support all ACT 125KHz RFID cards and fobs including HID-compatible tokens.

The ACTpro readers are available as:

- ✓ Proximity only (ACTpro 1030e/1030PM/1040e),
- ✓ Pin & Proximity (ACTpro 1050e), for additional security
- ✓ Pin only (ACTpro 1060e), where proximity cards are not required.



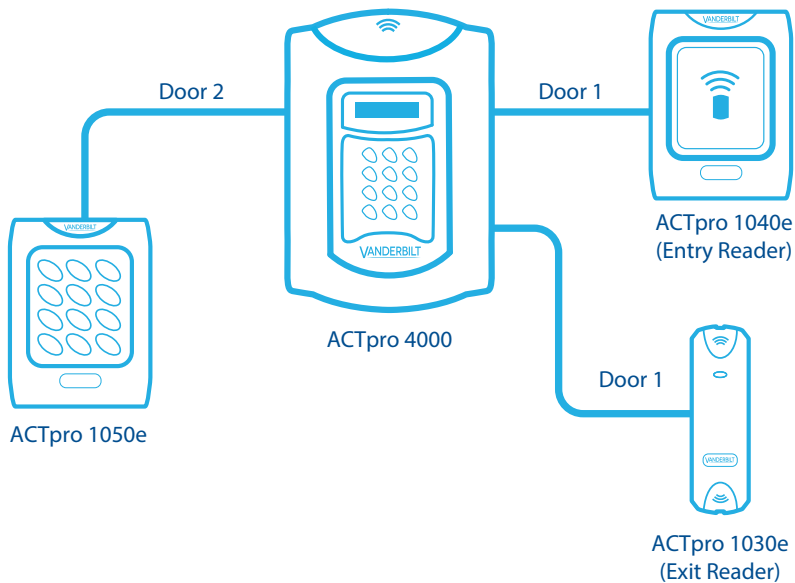
ACTpro e Readers with ACTpro 1500 Schematic:



ACTpro e

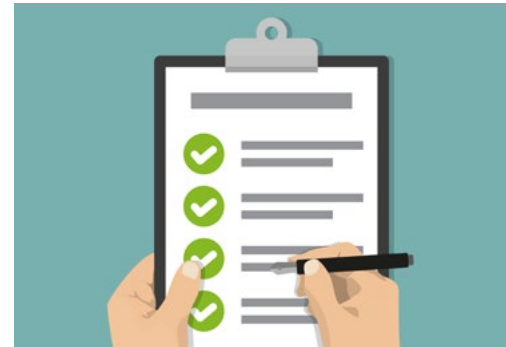
Proximity and Keypad Readers

ACTpro e Readers with ACTpro 4000 Schematic:



Main Features:

- ✓ Multi-format reader
- ✓ Choice of proximity only, pin and proximity or pin only
- ✓ ACTProx Cards and Fobs supported (125KHz RFID) H
- ✓ ID-compatible tokens supported (125KHz RFID) Indoor or outdoor installation (IP67)
- ✓ Built-in buzzer
- ✓ Tri-Colour LED
- ✓ Operates between -20C and +50C
- ✓ +5V DC to +12V DC operation
- ✓ Auto detect Clock and Data or 26-bit Wiegand Output
- ✓ Robust polycarbonate housing
- ✓ Vandal Resistant Cover (ACTpro 1030e VR) available for the ACTpro 1030e proximity reader



Installation Guidelines

- The ACTpro readers may be installed in exposed outdoor conditions (IP67)
- The maximum distance between the ACTpro reader and the ACTpro controller or door station is 100m with 12V DC (upto 30m with 5 V DC)
- Use 8 core screened cable to connect the
- ACTpro reader to the ACTpro controller / door station
The ACTpro readers can be paralleled for entry and exit readers to a maximum current of 500mA if powered from the ACTpro 1500 or ACTpro 100e door stations.

ACTpro e

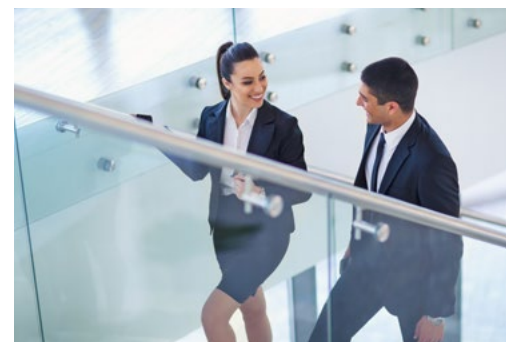
Proximity and Keypad Readers

Product Specification:

ACTpro 1030e	
Operating Voltage	5 - 12 Volts DC
Current Consumption	40 mA
Weight (grams)	189
Operating Temperature	-20 to +50 C
Dimensions (HxWxD)	120 x 37 x 15 mm
Mounting	Surface or Flush
Installation	Indoor/Outdoor (IP67)
Cabling:	2m Pigtail lead

ACTpro 1040e/1050e/1060e	
Operating Voltage	5 - 12 Volts DC
Current Consumption	40 mA
Weight (grams)	130 (1040), 225 (1050/1060)
Operating Temperature	-20 to +50 C
Dimensions (HxWxD)	94 x 130 x 25 mm
Mounting	Surface or Flush
Installation	Indoor/Outdoor (IP67)
Cabling	Connector Blocks

ACTpro-X 1030PM	
Operating Voltage	5 - 12 Volts DC
Current Consumption	40 mA
Weight (grams)	61
Operating Temperature	-20 to +50 C
Dimensions (HxWxD)	63 x 58 x 23 mm
Mounting	Panel
Installation	Indoor/Outdoor (IP67)
Cabling	Connector Blocks



ACTpro e

Proximity and Keypad Readers

Cabling Chart:

From	To	Cable	Restriction
ACTpro Reader	ACTpro Controller or ACTpro door stations	8 core screened	Max distance 100m at 12V DC 30m at 5V DC

Comparison Chart:

Feature	ACTpro 1030e	ACTpro 1040e	ACTpro 1050e	ACTpro 1060e	ACpro-X 1030PM
Mullion Style	Yes				
Proximity	Yes	Yes	Yes		Yes
Keypad			Yes	Yes	
5 - 12V DC Operation	Yes	Yes	Yes	Yes	Yes
Connector Block		Yes	Yes	Yes	Yes
2m Pigtail Lead	Yes				
Vandal Resistant Cover	Yes				
IP rating	IP67	IP67	IP67	IP67	IP67
Potted Electronics	Yes	Yes	Yes	Yes	Yes
Panel Mount					Yes

Ordering Information:

"Slimline Proximity Reader"	"ACTpro 1030e"
"Proximity Reader"	"ACTpro 1040e"
"Pin & Proximity Reader"	"ACTpro 1050e"
"PIN only Reader"	"ACTpro 1060e"
"Panel Mount Proximity Reader"	"ACTpro-X 1030 PM"
"Proximity Key Fob"	"ACTProx Fob-B*"
"Proximity ISO Card"	"ACTProx ISO-B*"
"Vandal Resistant Cover"	"ACTpro 1030 VR"

* These cards and fobs are compatible with the ACTpro and ACTsmart2 proximity reader range



VANDERBILT

vanderbiltindustries.com

@VanderbiltInd

Vanderbilt Industries

Vanderbilt International Ltd.

Clonsaugh Business and Technology Park
Clonsaugh, Dublin D17 KV 84, Ireland

+353 1 437 2560