

DIGITAL TARGHA

MULTI
WIRED
200

The Targha digital panel can be used for up to 2000 apartments. The backlit alpha numeric keypad can be used for digital calling as well as coded key access control and the graphic display can be used to select apartments or names from a list. The HAC/200 unit is combined with either a video or audio Targha module depending on the system. The low profile design and elegant styling make Targha an ideal choice for any application.

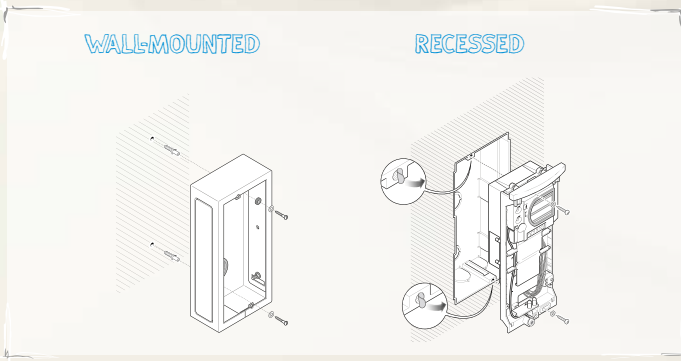


HAC/200

FEATURES

	Alphanumeric keypad	2000 calls 2000 codes
	Volume adjustment	✓
	Backlighting of keys	green LEDs
	Connection to door lock release	✓
	Access control function	✓
	IP54 protection	✓
	Wall-mounted and recessed installation	✓

TECHNICAL FEATURES



HSV/0ST & HAC/200

DIMENSIONS



	W (mm)	H (mm)	D (mm)
GH-ST Panel	99	207	28
HTS Embedding Box	90	198	51.5

AUDIO & VIDEO MODULES

Code	Description
HSV/0ST	Targha video entry panel (requires HAV/HAVC200 audio/video module)
HSC/0ST	Targha audio entry panel (requires HA/200 audio module)

DIGITAL MODULES

Code	Description
HAC/200	Digital Targha entry panel, up to 2000 codes, anodised aluminium

BACKBOX & SURFACEMOUNT

Code	Description
HTS/GR	Targha panel back box
HTS/VR	Targha metal back box
HBP/GR	Targha panel surface mount kit

The Targha digital panel must be combined with a Targha Audio or Video module panel for operation.

AUDIO AND VIDEO MODULES

Code	Description
HA/200	System 200 audio entry system module
HAV/200	System 200 audio/video entry system module (monochrome)
HAVC/200	System 200 audio/video entry system module (colour)