

DT15 AM

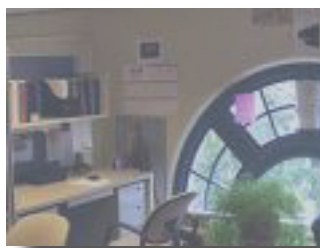
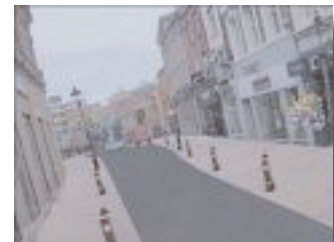
Dual Technology Sensor

DT Series



- Active IR Anti-Masking
- TS Grade 3, Class II
- Anti-Stealth Technology™
- Selectable End of Line Resistances
- NEW Shared Housing
- Varifocal Lens Design
- Enhanced DT Processing
- Adjustment-Free Optics

DT15 AM incorporates a highly effective X-band microwave together with well-proven PIR technology. This pairing produces a superb dual technology sensor that greatly improves false alarm immunity and is compliant with TS50131-2-4: 2004 Grade 3, Class II.



Featuring an advanced 'through-the-lens' active IR and microwave anti-mask system, the sensor detects any attempt to mask or inhibit detection of one or both alarm technologies. Anti-stealth precisely analyses microwave and PIR activity in a room and significantly increases detection in extreme conditions. It also combats intrusion attempts using infrared screening materials, and a sneak mirror is used to improve catch performance below the sensor satisfying the TS Grade 3 standard.

It has been designed to be simple to install with three LED's within the sensor to facilitate efficient analysis of the technologies. Incorporating a unique varifocal lens design that allows the unit to be mounted between 2.1 and 2.5m without adjustment.



 **Guardall**

A UTC Fire & Security Company

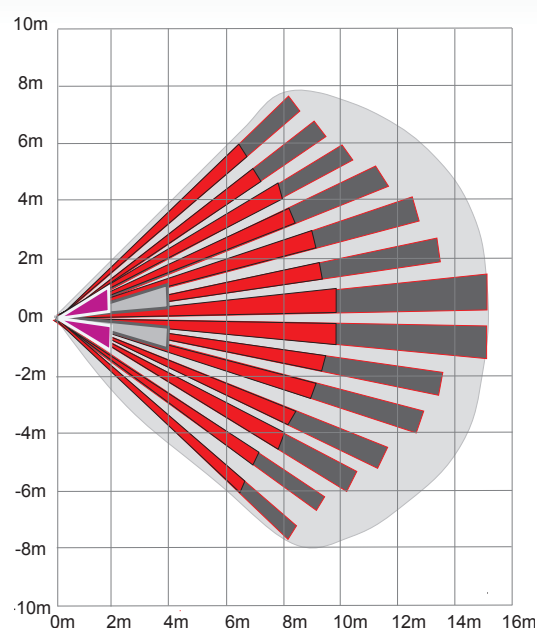
It's in our nature to protect
Secure Solutions

DT15 AM

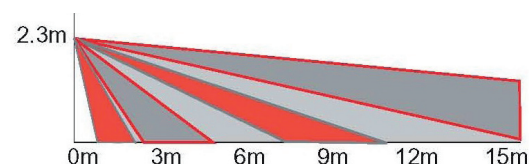
DT Series Dual Technology Sensor

Coverage Diagrams

Volumetric Plan View 15m



Volumetric Side View 15m



Specification

Power	Voltage	12 V (9V - 16V dc)
	Current	15 mA quiescent @12V dc 23 mA max @12V dc (All LED's ON)
	Max. ripple	2V peak to peak @ 12V dc
Microwave power		0.011uw/cm2@1m (average)
Frequency		X band
Alarm and Aux/Fault output		Normally closed, voltage free, solid state relay. Rated @ 30V, 50mA
Tamper output		Normally closed voltage free switch contacts
Alarm period		Approximately 3 seconds
Temperature range		-10°C to 55°C (14°F to 130 °F)
Microwave range adjustment		50% to 100% of range via easily accessible potentiometer
PIR coverage adjustment		±5° adjustment horizontally when corner mounted
Walk test LED's		Red Unit Alarm Green Microwave channel Yellow PIR channel
Remote LED enable		Control of LED indication using Test line
Anti-masking		Indicated on Aux output and LED's if selected
Latching		Standard (L-type) Latching
Microwave / PIR trouble		Indicated on Aux output and LED's if selected
Packed weight		135g approximately
Dimensions (H x W x D)		110 x 66 x 42 mm

Features and Benefits

Feature	Benefit
Adjustment free optics	Helps minimise the installation and set up time.
Sealed optics	Lower risk of unwanted alarms from insects.
Anti stealth	Improved detection in harsh environments.
Sneak mirror	Effective detection below the sensor to TS50131 Grade 3 standard.
Active IR anti-mask	Suitable for high security applications.
Sensitivity selection	Higher security and reduced false alarms risk.
Profiled temperature compensation	Stable detection through a range of operating temperatures.
Microwave range control	Precise adjustment of microwave detection area.
Digital fluorescent light rejection	No unwanted alarms from fluorescent lights.
Low voltage detection	Indication of problem before you get false alarms.
Multiple end of line resistor values	Easier and more effective installation.
Microwave/PIR supervision	Continuous operation in the event of microwave/PIR failure.
Microwave day disable	No microwave emissions during unset/day.
Automatic self test	Identification of problems by constantly monitoring performance.
Control input	Enables detector alarm memory, anti-mask and LED selection.
TS50131 Grade 3 Class II compliant	Can be used in all installations to this standard.
Solid state relays	Cannot be defeated by external magnet.
Test input	LED can be switched from the panel.
Three LED's	Easier to check status of each technology as well as unit alarm.
DIL switches	Easy selection of features during installation.

Ordering Information

W76570 Guardall DT15 AM 15m
 W72321 Guardall LPB2 Low Profile Wall Bracket
 W72977 Guardall CMB1 Ceiling Mount Bracket

Guardall Ltd,
 Queen Anne Drive, Lochend Industrial Estate,
 Newbridge, Edinburgh, EH28 8PL, UK
 Tel +44.131.333.2900 Fax +44.131.333.4919
www.guardall.com