

Electronic Locking Magnet Range



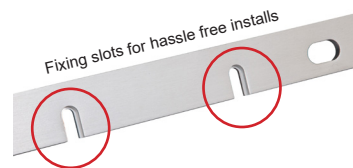
Access Control



Architectural Brackets for Slimline Magnet (600lb)

Technical specifications

- Architectural FZ & L Brackets
- Adjustable to suit different applications
- Easy Install 'L' Bracket
- For use with all single ML600 range of products
- Covers for screws and bolts (no visible fixings)
- Covers entire length of maglock
- For inward opening doors
- Aesthetically pleasing



FEATURES

- For inward opening doors
- No visible fixings
- Specially designed 'L' Bracket that allows significantly easier installs

L Bracket	250x47x39 (mm)	Easy install 'L' Bracket	1Kg (Boxed) / 950g (Unboxed)
Z1 Bracket	250x50x55 (mm)	Z Bracket	
F Bracket	250x60x45 (mm)	F Bracket	

Other items in the RGL range.

