



# AX11000 Next-Gen Tri-Band Gaming Router

DOMINATE THE  
COMPETITION



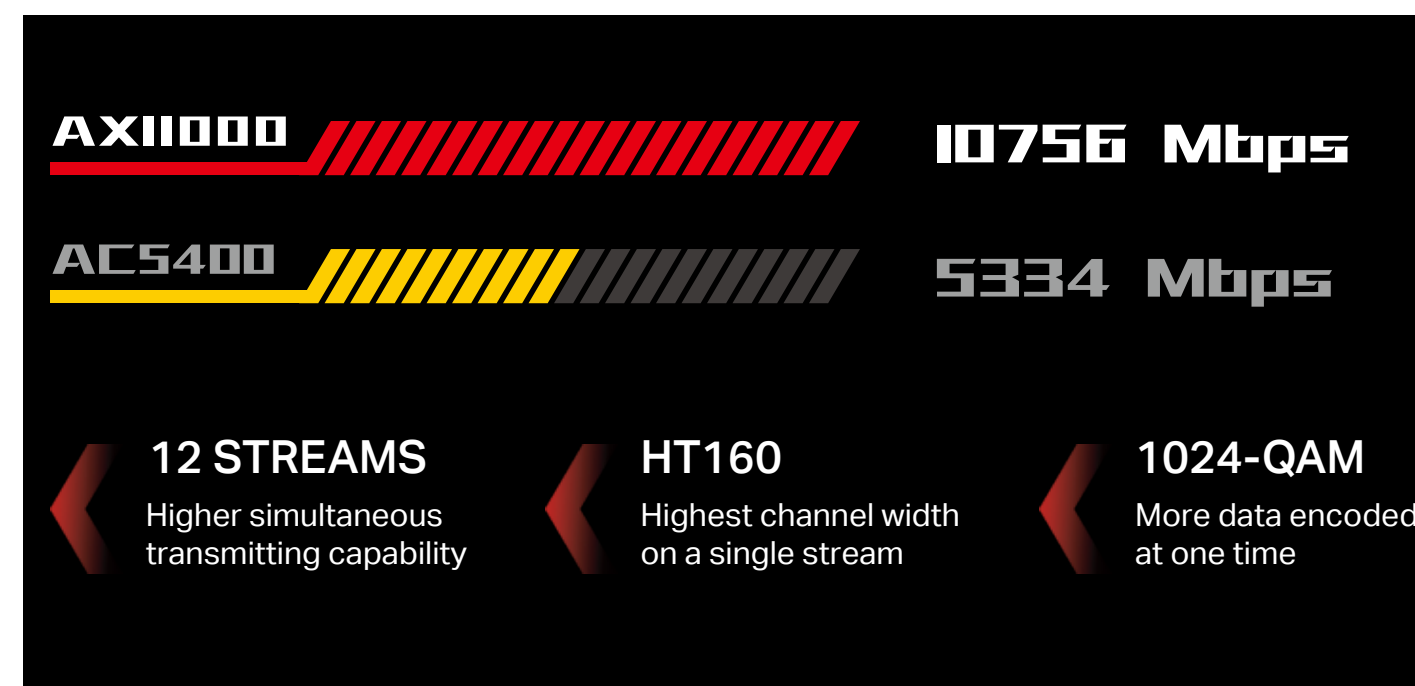
Archer AX11000

- Game Accelerator
- Game Dashboard
- 10 Gbps  
Ultra Wi-Fi Speeds
- 1.8 GHz  
Quad Core CPU
- 2.5 Gbps  
WAN Port

# Highlights

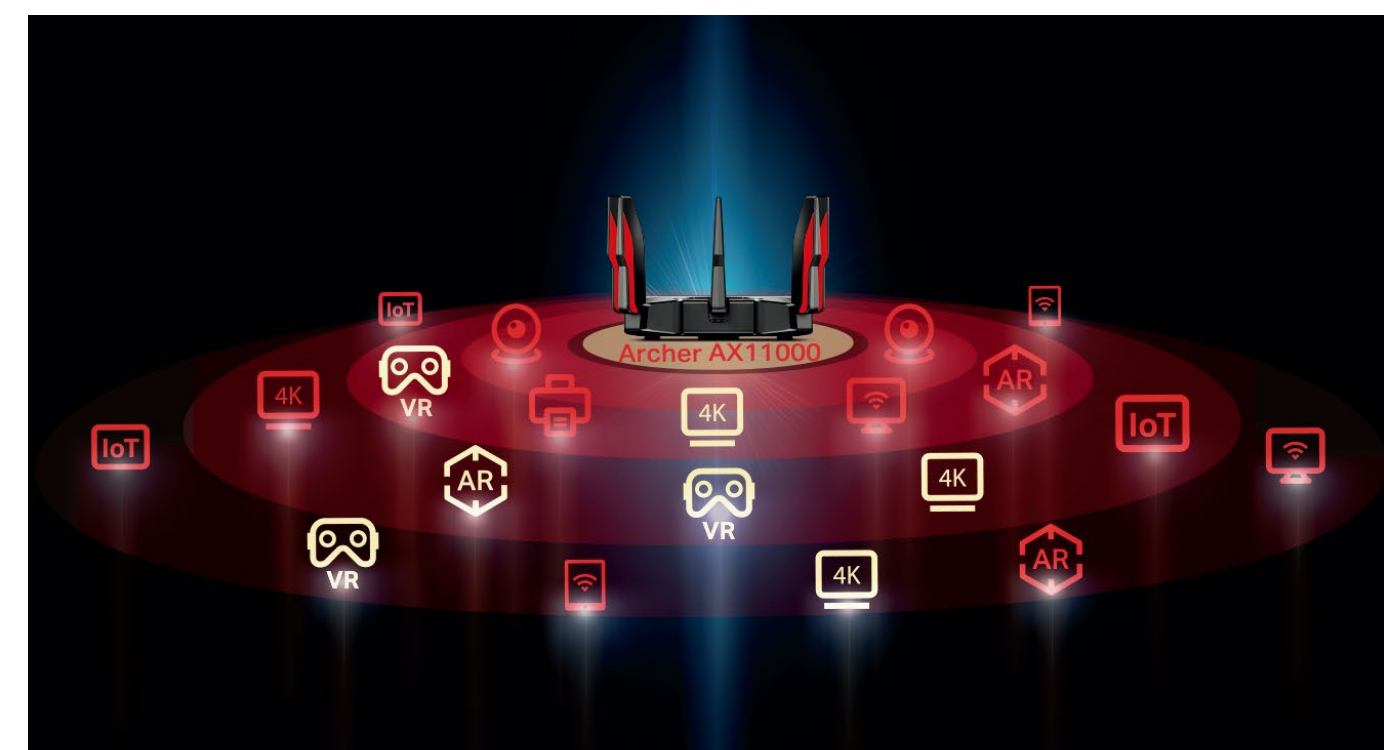
## **802.11 AX** Wi-Fi 6 Brings over 10 Gbps Wireless Speeds

Faster speed the router is, less congestion for gaming rigs. Armed with Wi-Fi 6, Archer AX11000 becomes the next-level speed machine that offers astonishing Wi-Fi speeds up to 10756 Mbps with an extended range.



## 4x Greater Capacity to Link More Devices

More connected devices shall bring more fun rather than dragging the performance. Revolutionary OFDMA is introduced to improve average throughput by 4x and cut the latency. Take advantage of incredibly low latency to demolish your enemies, with your team crew together.

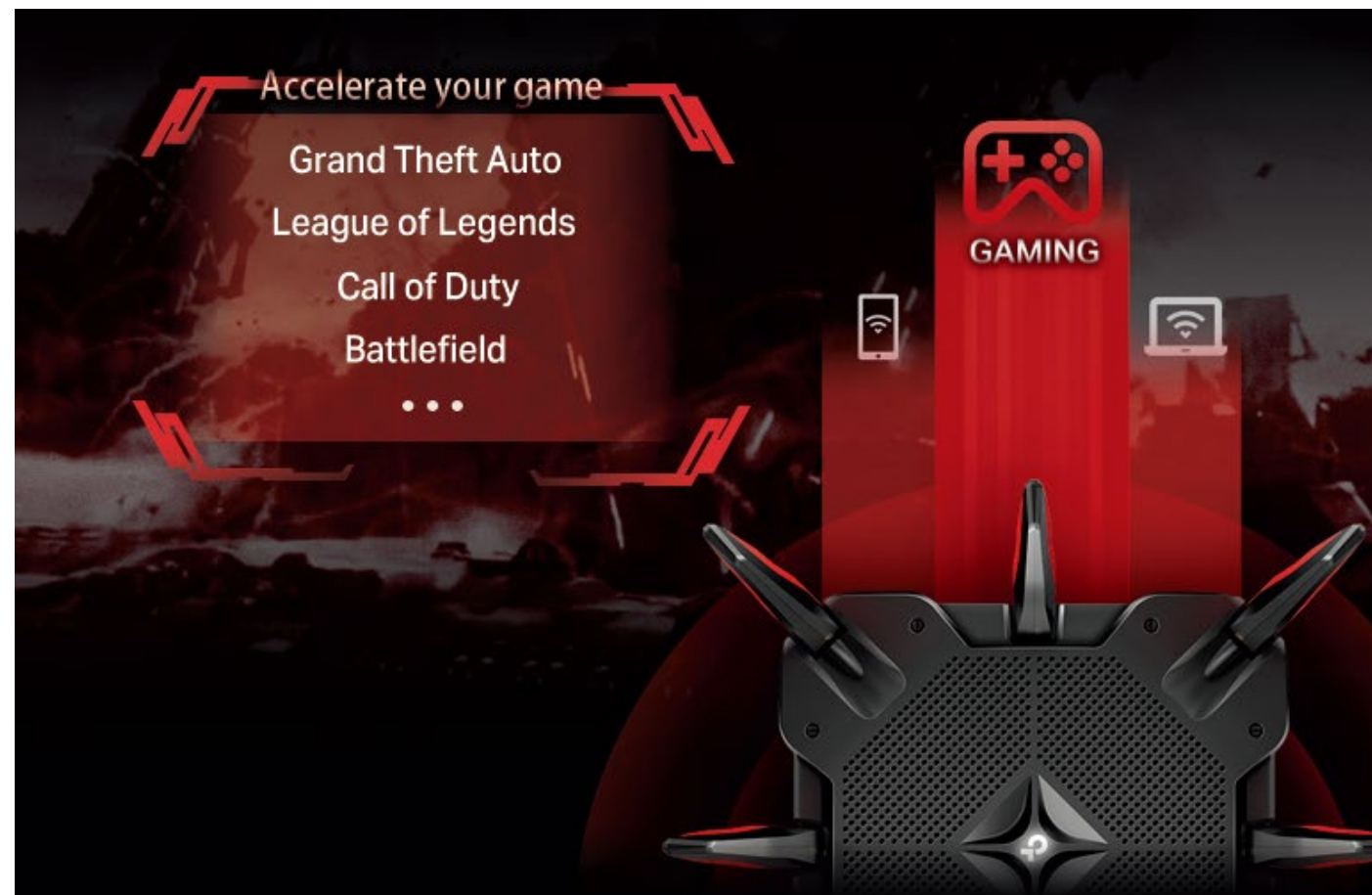




# Highlights

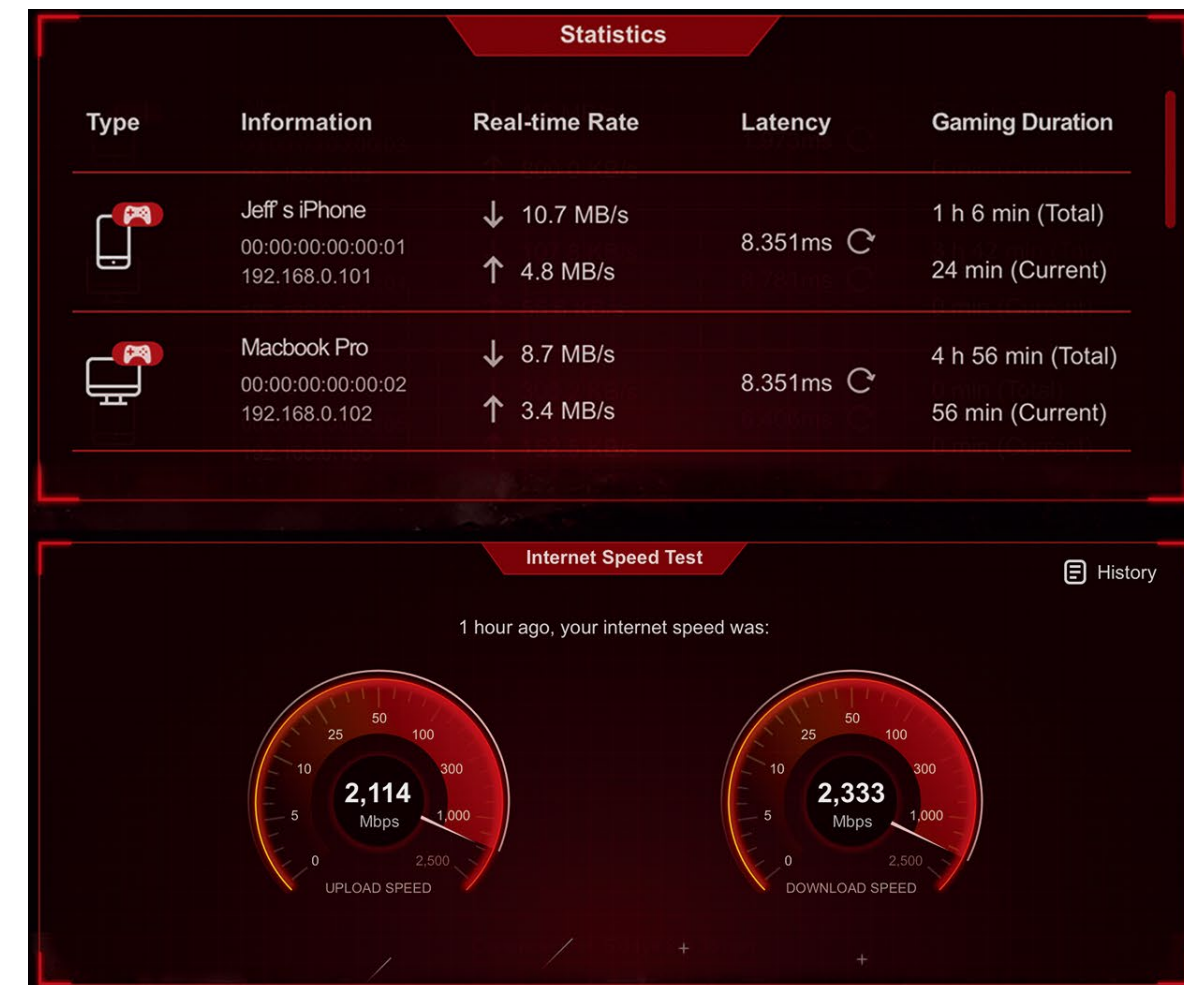
## Accelerate Gaming Connections

Game Accelerator automatically detects and optimizes gaming streams, to ensure your gaming stays immersive, and keep your network as fast as your reaction speed.



## Know Your Network

Game Statistics shows the real-time latency, game duration and system utilization at a glance in a refreshed dashboard, puts total control at your fingertips.





# Features



## Speed

- **A Speed Racer** – AX11000 Tri-Band Wi-Fi speed boosted by 1024-QAM delivers ultra-fast experience with the Wi-Fi 6 standard, achieving an ultimate wireless speed of 1148 Mbps on 2.4 GHz and 2 × 4804 Mbps on 5 GHz
- **Game Accelerator** – Automatically accelerate mainstream online games. Reduced latency ensures your gaming stays immersive
- **Powerful Processing** – A 1.8 GHz Quad-Core CPU and 3 co-processors eradicate latency and deliver stable performance



## Wi-Fi Range

- **Ultimate Range Wi-Fi** – 8 high-gain external antennas deliver a Wi-Fi signal to every corner of your home, making all of your connections more efficient and stable.
- **RangeBoost** – Greatly enhances receiving sensitivity to deliver a more stable router-client link
- **Beamforming Technology** – Concentrates Wi-Fi signals towards individual devices to ensure stronger connections

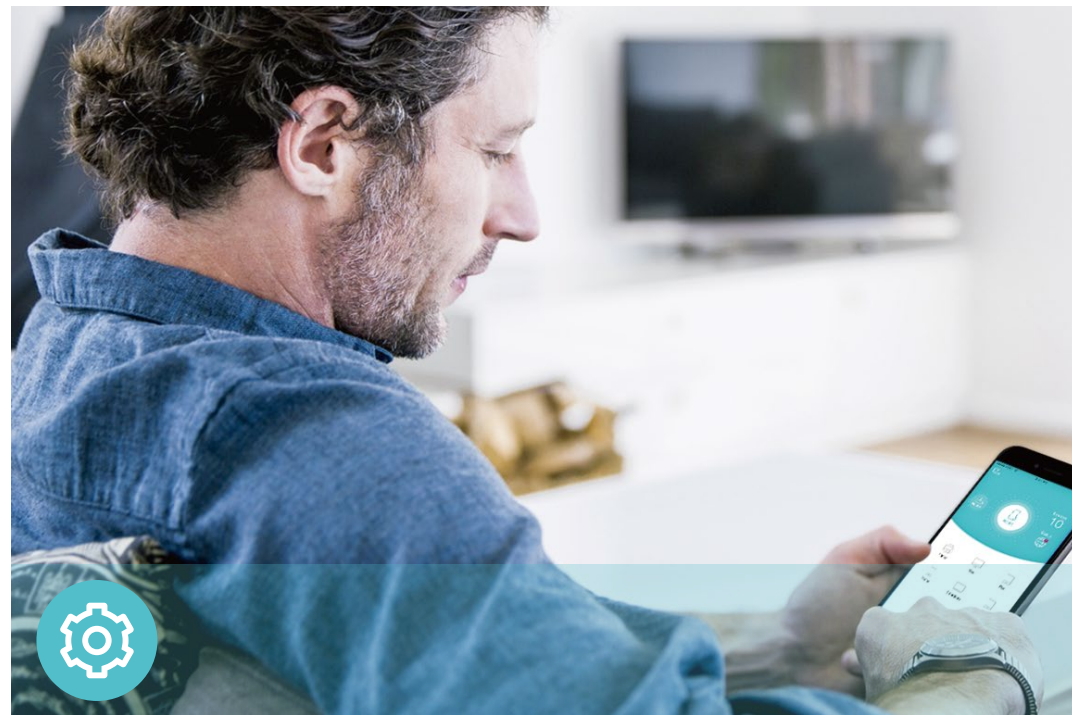


## Reliability

- **Intelligent Connection** – Smart connect directs clients to less congested band and Airtime Fairness optimizes time usage
- **Easy Bandwidth Management** – Advanced QoS makes it easier for you to manage the bandwidth of connected devices or applications
- **Highly Efficient** – OFDMA and MU-MIMO increases the average throughput by 4× in high-density scenarios



# Features



## Ease of Use

- Intuitive Web UI – Ensures quick and simple Installation without hassle
- Fast Encryption – One-touch WPA wireless security encryption with the WPS button
- Easy On/Off – Turn on/off wireless radio using the Wi-Fi button; turn on/off LEDs using the LED button
- Power On/Off – Conveniently power on or off your router as required
- Hassle-free Management with Tether App – Network management is made easy with the TP-Link Tether App, available on any Android and iOS device
- Easy and Smart – Bluetooth onboard makes configuration easier than ever. Compatible with Amazon Alexa



## Security

- Game Protector – TP-Link HomeCare™ provides your entire network with advanced antimalware service powered by Trend Micro™
- Guest Network – Keeps your main network secure by creating a separate network for friends and visitors
- Access Control – Establishes a whitelist or blacklist to allow or restrict certain devices to access the internet
- Parental Controls – Restricts internet access time and contents for children devices
- Encryptions for Secure Network – WPA-PSK and WPA2-PSK encryptions provide active protection against security threats



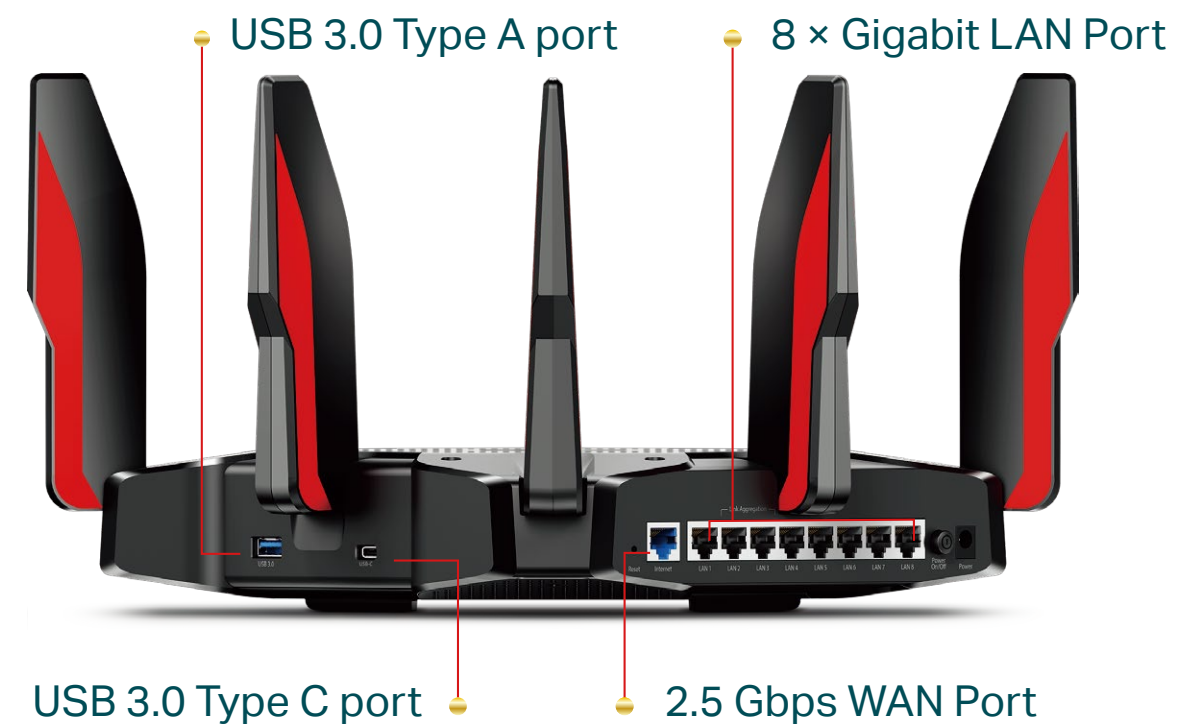
## Easy Sharing

- Type C & Type A USB 3.0 Ports – Provide data transfers up to 10× faster than a traditional USB 2.0 port.
- Built-in Media Server – Allows you to play music, watch videos and view photos from any device on your network

# Specifications

## Hardware

- Hardware: 1.8 GHz Quad-core + 1 GB RAM + 512 MB Flash + Bluetooth
- Ethernet Ports: 1 × 2.5 Gbps WAN Port + 8 × Gigabit LAN Port
- USB Ports: 1 × USB 3.0 Type C + 1 × USB 3.0 Type A
- Buttons: WPS Button, Wi-Fi On/Off Button, LED On/Off Button, Power On/Off Button, Reset Button
- Antennas: 8 High-Performance External Antennas
- External Power Supply: 12V/5A
- Dimensions (W x D x H): 11.3×11.3×7.2in (288×288×184mm)



## Wireless

- Wireless: 1148 Mbps on 2.4 GHz (802.11ax) + 2 × 4804 Mbps on 5 GHz (802.11ax), compatible with 802.11a/b/g/n/ac Wi-Fi standards
- Frequency: 2.4 GHz and 5 GHz
- Transmit Power:
  - CE: <20dBm(2.4 GHz), <23dBm(5.15 GHz~5.35 GHz); <30dBm(5.47 GHz~5.725 GHz)
  - FCC: <30dBm(2.4 GHz & 5.15 GHz~5.25 GHz & 5.725 GHz~5.825 GHz)
- Reception Sensitivity:
  - 5 GHz:
    - 11a 6Mbps: -97dBm, 11a 54Mbps:-79dBm
    - 11ac VHT20\_MCS0:-96dBm, 11ac VHT20\_MCS11:-66dBm
    - 11ac VHT40\_MCS0:-94dBm, 11ac VHT40\_MCS11:-63dBm
    - 11ac VHT80\_MCS0:-91dBm, 11ac VHT80\_MCS11:-60dBm
    - 11ac VHT160\_MCS0:-88dBm, 11ac VHT160\_MCS11:-55dBm
    - 11ax HE20\_MCS0:-95dBm, 11ax HE20\_MCS11:-63dBm
    - 11ax HE40\_MCS0:-92dBm, 11ax HE40\_MCS11:-60dBm
    - 11ax HE80\_MCS0:-89dBm, 11ax HE80\_MCS11:-58dBm
    - 11ax HE160\_MCS0:-85dBm, 11ax HE160\_MCS11:-55dBm
  - 2.4 GHz:
    - 11g 6Mbps: -97dBm, 11a 54Mbps:-79dBm
    - 11n HT20\_MCS0:-97dBm, 11n HT20\_MCS7:-78dBm
    - 11n HT40\_MCS0:-95dBm, 11n HT40\_MCS7:-75dBm
    - 11ac VHT20\_MCS0:-96dBm, 11ac VHT20\_MCS11:-67dBm
    - 11ac VHT40\_MCS0:-94dBm, 11ac VHT40\_MCS11:-64dBm
    - 11ax HE20\_MCS0:-96dBm, 11ax HE20\_MCS11:-64dBm
    - 11ax HE40\_MCS0:-93dBm, 11ax HE40\_MCS11:-61dBm
- Wireless Function: Enable/Disable Wireless Radio, WDS Bridge, WMM
- Wireless Security: 64/128-bit WEP, WPA/WPA2, WPA-PSK/WPA2-PSK encryptions



# Specifications

## Software

- Quality of Service: Device and Application Prioritisation
- WAN Type: Dynamic IP/Static IP/PPPoE/L2TP/PPTP
- Management: Access Control, Local Management, Remote Management
- DHCP: Server, DHCP Client List, Address Reservation
- NAT Forwarding: Port Forwarding, Port Triggering, UPnP, DMZ
- Dynamic DNS: DynDns, NO-IP, TP-Link
- VPN Server: OpenVPN, PPTP VPN
- Access Control: Local Management Control, Host List, White List, Black List
- Firewall Security: SPI Firewall, IP and MAC Address Binding
- Protocols: IPv4, IPv6
- USB Sharing: Supports Samba(Storage)/FTP Server/Media Server
- Guest Network: 2.4GHz Guest Network, 5GHz Guest Network
- HomeCare™: Parental Controls, QoS, Antivirus

## Others

- Certification:  
CE, FCC, RoHS
- System Requirements:  
Microsoft Windows 98SE/NT/2000/XP/Vista™/7/8/8.1/10, MAC OS, NetWare, UNIX or Linux  
  
Internet Explorer 11, Firefox 12.0, Chrome 20.0, Safari 4.0, or other Java-enabled browser  
  
Cable or DSL Modem  
  
Subscription with an internet service provider (for internet access)
- Environment:  
Operating Temperature: 0°C~40°C (32°F ~104°F)  
Storage Temperature: -40°C~70°C (-40°F ~158°F)  
Operating Humidity: 10%~90% non-condensing  
Storage Humidity: 5%~90% non-condensing
- Package Contents  
Wireless Router Archer AX11000  
  
Power Adapter  
  
RJ45 Ethernet Cable  
  
Quick Installation Guide



For more information, please visit

[https://www.tp-link.com/products/details/cat-9\\_Archer-AX11000.html](https://www.tp-link.com/products/details/cat-9_Archer-AX11000.html)

or scan the QR code left

Specifications are subject to change without notice. All the brands and product names are trademarks or registered trademarks of their respective holders.

This device complies with part 15 of the FCC Rules. Operation is subject to the following two conditions: (1) This device may not cause harmful interference, and (2) this device must accept any interference received, including interference that may cause undesired operation.

Attention: This device may only be used indoors in all EU member states and EFTA countries.

\*Maximum wireless signal rates are the physical rates derived from IEEE Standard 802.11 specifications. Actual wireless data throughput and wireless coverage are not guaranteed and will vary as a result of network conditions, client limitations, and environmental factors, including building materials, obstacles, volume and density of traffic, and client location.

\* Use of 802.11ax Wi-Fi standard requires clients to also support the 802.11ax Wi-Fi standard.

\* Up to 4x Capacity refers to 4x increase in median throughput under dense environment compared to 4x4 11ac wave 2 router.

\*Use of MU-MIMO requires clients to also support MU-MIMO.

\* HT160 requires client device that supports 160 MHz channel width on Wi-Fi.

\* This router may not support all the mandatory features as ratified in Draft 3.0 of IEEE 802.11ax specification.

\* 2.5 Gbps internet speed requires compatible service plans and equipment.

\* Any revision to a supported game may influence Game Accelerator's ability to support it. Please refer to product page for the full list of supported games.

©2020 TP-Link