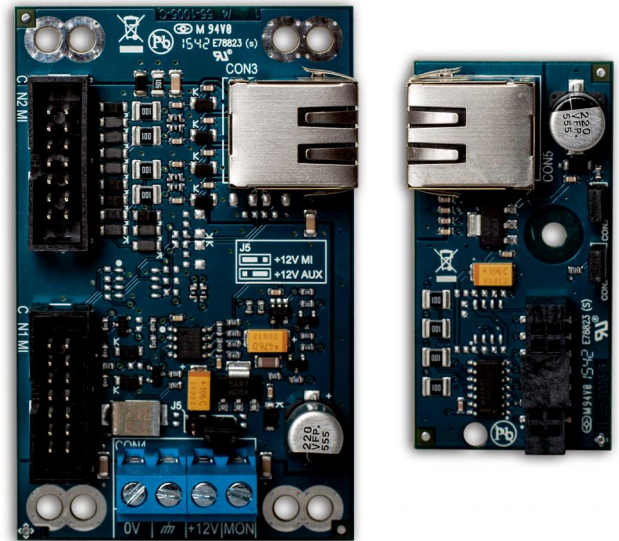


ATS7072

Remote ATS1238 expander kit + housing

Remote ATS1238 expander kit

The ATS7072 offers the possibility to install the ATS1238 outside the housing of the panel.



Details

- Remote installation solution for ATS1238
- Up to 100m distance
- RJ45 connection between master and slave pcb
- ATS7070 master PCB to be connected to panel MI bus
- ATS7071 slave PCB to be connected to ATS1238 MI connection
- Can be installed into TX-9000-03-1 empty housing
- Supported by - Advisor Advanced ATsx000A firmware version 026.026.0141 and higher - Advisor Advanced ATsx500A firmware version MR3.0.37437 - Advisor Advanced ATsx500A firmware version MR4.0.37542 and higher
- Supported by ATS1238 FW version 2.2
- TX-9000-03-1 housing Included
- MI-bus flat cable included

ATS7072

Remote ATS1238 expander kit + housing

Technical specifications

General

Expander type	Wireless expander
Product line	Advisor Advanced
Connection type	Plug-in, RJ45
Max. distance from panel	100 m
Max. per panel	1
Specified cable	WCAT54
Supported ATsx000A firmware	FW v26.026.0141 and higher
Supported ATsx500A MR3 firmware	FW MR3.0.37437
Supported ATsx500A MR4 firmware	FW MR4.0.37542 and higher
Supported ATS1238 firmware	FW v2.2 and higher

Electrical

Operating voltage	9.5 to 14.0 VDC
Power consumption	40 mA at 13.8 V (ATS7070), 40 mA at 13.8 V (ATS7071)

Physical

Physical dimensions	50 x 80 mm (ATS7070), 30 x 59 mm (ATS7071)
---------------------	--

Environmental

Operating temperature	0 to 50°C
Relative humidity	95% non condensing
Environment	Indoor
IP rating	IP30
Class	Class II

Standards & regulation

Certification	EN50131 Grade 2
---------------	-----------------

Kit contains

Master PCB	ATS7070
Slave PCB	ATS7071
Housing for ATS1238	TX-9000-03-1
Cable	MI-bus flat cable

As a company of innovation, UTC Fire & Security reserves the right to change product specifications without notice. For the latest product specifications, visit UTC Fire & Security online or contact your sales representative.

11 March 2019 - 20:21



**United
Technologies**

Climate | Controls | Security