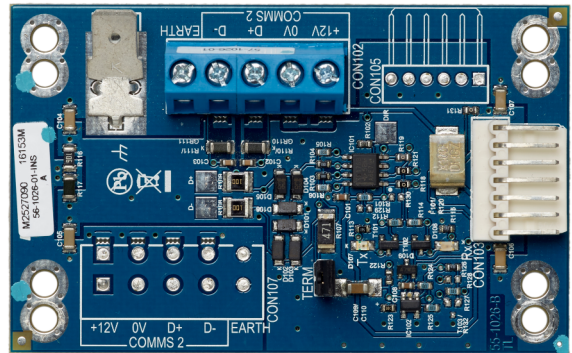


# ATS670

## Second RS485 LAN Extension Module for ATS4500A



# ATS670

## Second RS485 LAN Extension Module for ATS4500A

### Technical specifications

---

#### General

Accessory group	Advisor Advanced
Type	Module

#### Electrical

Operating voltage	9.5 to 13.8 VDC
Current consumption	50 mA

#### Physical

Physical dimensions	80 x 50 mm
---------------------	------------

#### Environmental

Operating temperature	-10 to +55°C
-----------------------	--------------

#### Standards & regulation

Certification	EN50131 Grade 3, VdS
---------------	----------------------