



Product Data Sheet

ATS1170

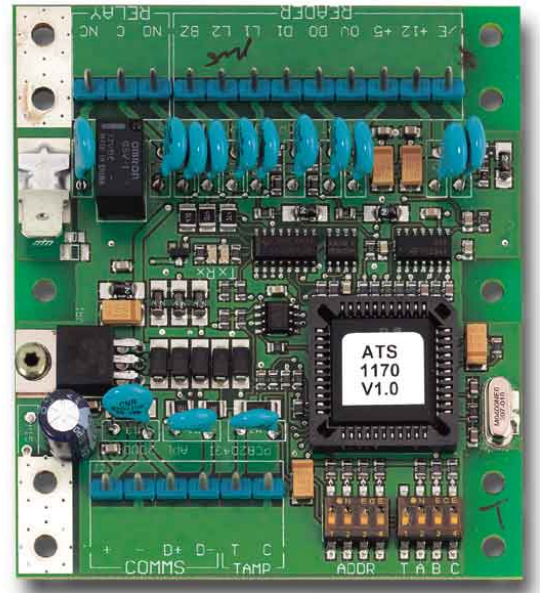
ATS Reader interface (Single door controller)

Product Overview

The ATS1170 is a Single Door Controller with a built-in interface for Wiegand readers. The unit will be polled as a RAS on the RS485 data bus and therefore needs to be programmed as a Non LCD RAS. You can connect now ATS readers directly to the ATS bus, allowing them to be used as a RAS for arming/disarming. For special applications the unit can operate in a limited off line mode with an external 12 VDC power supply. In this off line mode a database for 20 users is available. It can be used as a standard door controller. For access control applications a Request To Exit input and one relay for an electrical door lock are standard available on board.

Installation

ATS1170 PCB can be mounted in any existing control panel housing which supports the size B board. Addressing : DIP switches 1 to 4 are used to identify the RAS number.



Standard Features

- Single Door Controller with offline database for 20 users
- Polled as a RAS on the RS485 data bus
- Provides the connectivity to Wiegand readers
- Operational in stand-alone with an external 12 VDC power supply
- Request To Exit input on board
- 1 relay on board for electrical door lock

ATS1170

ATS Reader interface (Single door controller)

Specifications

Supply voltage	10.5 - 13.8 VDC
Operating current	45 mA (no peripheral devices fitted)
Aux power O/P	5 V - 100 mA max. for readers
Max. number on panel bus	15
Max. distance from	1.5 km from control panel
Specified cable	Aritech WCAT 52/54 or equivalent
Compatible cards	Not applicable
Compatible formats on control panels	Wiegand 26 bits - MagSwipe
Compatible formats on 4 Door Controller	See 4 Door Controller data sheet
Dimensions (W x H)	80 x 52 mm
Operating temperature	0° to +50°C

Ordering Information

Part No.	Description
ATS1170	ATS Reader interface (Single Door Controller)

