

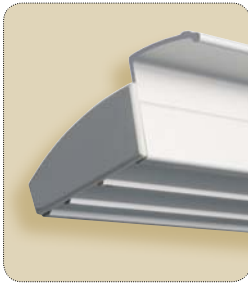


## RETROFIT HOUSING AND HANDLE ACCESSORIES

▶ ESSENTIAL ACCESSORIES TO OPTIMIZE YOUR SITE

### PRP800

### Reinforcement section (opposite side of the door)



- **For BO800RN retrofit housing.**
- **Suitable for metal, wood and glass door.**

- Dimensions (L x W x D): 2500 x 57 x 41mm.
- Material: Aluminium.

**RAL colours (on request)**

Colours provided as a rough guide. Please consult a colour chart



Commercial



Industrial



Public Buildings



Multi-tenant occupancy



Residential



CE Certification



WEEE

CODE	REFERENCE	DESCRIPTION
F0519000055	PRP800	REINFORCEMENT SECTION WITH HANDLE FOR OPPOSITE SIDE OF THE DOOR
F0519000017	RAL	RAL COLOUR OPTION

### Glass door U-bracket

### UBK25



Commercial



Industrial



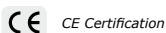
Public Buildings



Multi-tenant occupancy



Residential



CE Certification



WEEE



- **The UBK25 is a U bracket for mounting retrofit housings & handles on glass doors:**

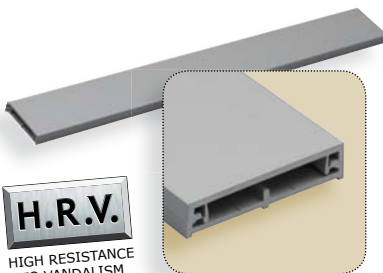
- Dimensions (L x W x D): 2500 x 62 x 33.5mm.



CODE	REFERENCE	DESCRIPTION
F0517000007	UBK25	2500MM U-BRACKET GLASS DOOR FIXING

### ALMA

### Aluminium Cable tray



- **Aesthetic.**

- Dimensions (L x W x D): 2500 x 43 x 10mm.
- Material: SAA finish\*\*.
- Option: RAL (On request).

**RAL colours (on request)**

Colours provided as a rough guide. Please consult a colour chart



Commercial



Industrial



Public Buildings



Multi-tenant occupancy



Residential



CE Certification



WEEE

CODE	REFERENCE	DESCRIPTION
F0519000086	ALMA	ALUMINIUM CABLE TRAY
F0519000017	RAL	RAL COLOUR OPTION

\* Refer to Limited Lifetime Warranty Conditions.  
 \*\* Satin Anodised Aluminium Finish.