



ACL800SUW-BCMF-S

ACL800 Biometric Capacitive with MIFARE reader - Fingerprint, Wiegand, Surface mount, 9500 Templates, Silver

Product description

The ACL800SUW-BCMF is a Wiegand biometric and Mifare reader for access control applications with programmable Wiegand output. It offers storage of up to 9500 fingerprints, it reads Mifare Classic 1K & 4K, Ultralight, Desfire cards/tags and has a programmable Wiegand Output (24 to 80 bits). Configuration of the readers and fingerprint enrollment is done through the ACL800 BioManager Software.

The ACL800 range

The current ACL800 range is over 10 years old and is due for a refresh. The ACL800 range that consisted out of access readers, keypad readers and request-to-exit sensitive pushbuttons, has been extended with Biometric readers. There are two models, being the swipe and the touch capacitive biometric sensors. They are available in any combination of biometric swipe / touch capacitive, swipe / touch capacitive + keypad, swipe / touch capacitive + proximity reader, swipe / touch capacitive + Mifare reader.

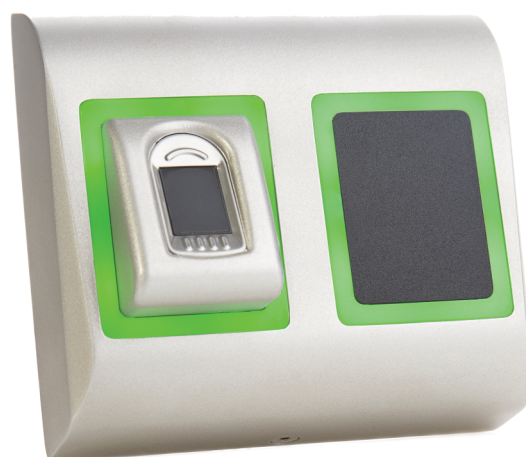
Wiegand range

The Wiegand devices are ideal to be networked by using the TCP / IP to RS485 converter ACL800FL-CONV-W. Up to 31 Wiegand devices can be daisy-chained over RS485 and are managed by the ACL800 BioManager. When you need more devices, then simply add another converter. The access rights can be uploaded from the ACL800 BioManager to all the Wiegand devices connected to the converter. You have the option to either store the fingerprint templates in the reader or on the credential for privacy reasons.

ACL800 BioManager

Fingerprint and reader management software for biometric readers when used with third party access control systems. Fingerprint enrollment is done from any networked biometric reader or from a USB desktop enrollment unit. The fingerprints could be sent to one or all biometric readers in the network. ACL800 BioManager is a free application and also manages the access levels.

Compatible with : Windows 7, Windows 8 and Windows 10.



Details

- Indoor/outdoor
- Dust proof and water-resistant (IP65)
- Attractive and timeless design
- Includes a buzzer
- Tri-color LED's
- Surface mount
- Backlight illumination
- Two-factor authentication
- Biometric fingerprint reader with Mifare card

ACL800SUW-BCMF-S

ACL800 Biometric Capacitive with MIFARE reader - Fingerprint, Wiegand, Surface mount, 9500 Templates, Silver

Technical specifications

Technology

Reader type	BioMetric, Smart Card
Reader operating-transmitting frequency	13.56 MHz
Supported technology 13.56 MHz	MIFARE Classic (CSN), MIFARE DESFire (CSN), MIFARE DESFire EV1 (CSN), Mifare DESFire EV2 (CSN), MIFARE Plus (CSN), MIFARE Ultralight (CSN)
Mifare type	ISO14443A
No. of Mifare bytes CSN	4 Byte (S50), 7 Byte (S70)
Read write	No
SAM module embedded	No
Mifare Classic	4UID 1K & 4K (7UID converted to 4UID)
Mifare Ultralight	4UID 1K & 4K (7UID converted to 4UID)
Mifare DESFire EV1/EV2	2K, 4K & 8K

System

Reading distance	1.5 to 5.5cm
Max. reader distance to panel	50 m
RTE (Request To Exit)	No
CSN (Card Serial Number)	Yes
Custom data model	No
No. of LEDs	3
No. of covers included	1

Biometric

Biometric type	Fingerprint
Biometric sensor type	Capacitive
Biometric template storage size	up to 9500 fingerprints
Fingerprints per user	1-10 fingerprints
1:1000 identification time	970 msec, including feature extraction time

Interface & connections

Interface	Wiegand
Connector type	Pigtail
Pigtail length	100 cm
Protocol programming	By ACL800 BioManager Software
Interface	Wiegand 24 to 80 bits; Default: Wiegand 26bit

Tamper type

Pry-off tamper	No
Opening tamper	Yes

Operation

Stand-alone	No
PIN keypad	No
Green LED	Externally controlled
Red LED	Externally controlled
Orange LED	Idle mode
Illumination	Blue backlight (programmable on/off control)
Buzzer	1 (internal)
Authentication	Finger, Finger or Card, Finger or/and Card, Finger On Card

Support

Language installation manual	English
------------------------------	---------

Electrical

Power supply type	VDC
Power supply value	9 to 14 VDC
Current consumption	160 mA at 12 VDC max

Physical

Physical dimensions	100 x 94 x 30 mm
Net weight	300 g
Shipping weight	310 g
Colour	Silver
Material	Moulded aluminium
Form factor	Oversized
Mounting type	Surface Mount

Environmental

Operating temperature	-20 to +50°C
Storage temperature	-20 to +50°C
Environment	Indoor / Outdoor
IP rating	65

Standards & regulation

Compliance	CE, RoHS
------------	----------

As a company of innovation, UTC Fire & Security reserves the right to change product specifications without notice. For the latest product specifications, visit UTC Fire & Security online or contact your sales representative.

