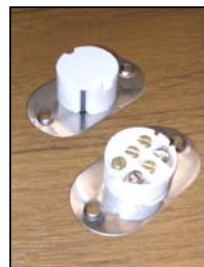
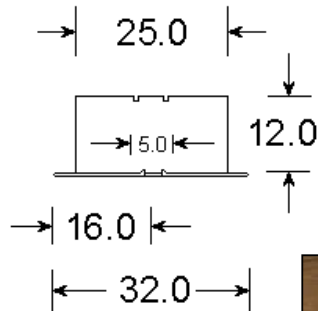
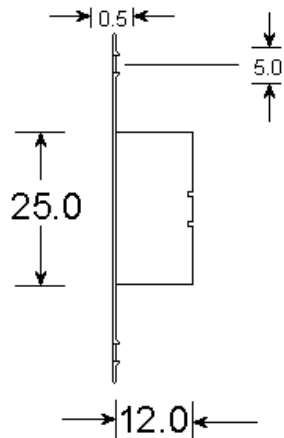
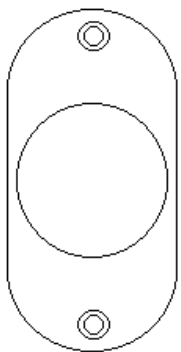


58.0

44.0

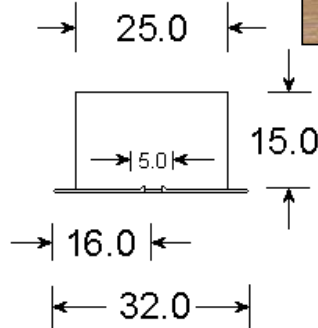
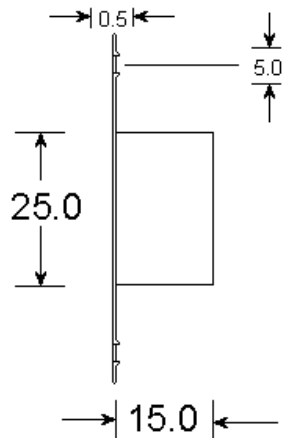


Magnet



58.0

44.0



Description:
Grade 1 Class 1
6 Terminal Flush Contact Quick Fit
Single Reed

Operating Gap:
25-30mm (Approx)

Materials:
High Impact Polystyrene
Stainless Steel Plate

Magnet:
Ferrite or Alnico V

Contact Material:
Rhodium

Voltage Range:
1 – 100v DC
125v AC Max

Switching Current
500mA Max DC
500mA Max AC

Temperature Range:
-40°C to +50°C

Colours:
White (No Suffix)
Brown (Suffix B)

Fixing Screws Provided

KNIGHT

FIRE & SECURITY PRODUCTS LTD

<mailto:info@knightfireandsecurity.com>

Unit 84 Seawall Road Ind. Estate
Cardiff UK CF24 5TH

Tel: 0 (00 44) 29 20 48 81 29

Fax: 0 (00 44) 29 20 48 91 32

Drawing No: **A91**

Drawn: *Chris Moorman*

Date: *04/09/09*

All dimensions in mm
Do not scale



© Knight Fire & Security Products Ltd
All cases of TM Infringement will be pursued.