



NEXT GENERATION SWITCHMODE 12V MODULAR PSUs

POWER SUPPLIES

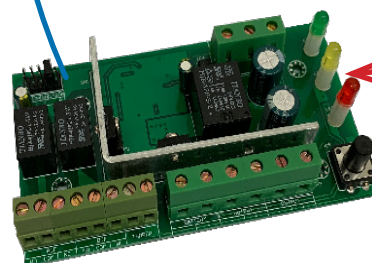
Market leading Power Supplies just got better, now with replaceable modular boards. Allowing you to upgrade your products both quickly and easily



1202SM-1



1202SM-2



12VMPB

SPECIFICATION

- 1202SM-1 / 1203SM-1
1202SM-2 / 1203SM-2 / 1205SM-2
- Full current to load
 - 13.8VDC regulated output
 - Additional battery charging
 - Deep discharge protection
 - Current limiting
 - Short circuit protection
 - 230V fused input
 - Mains transient protection
 - Compliant to EMC EN61000-6-1 & 3
- Available in 2, 3 and 5 AMP

All new 12V RGL PSUs can be upgraded to mains and battery monitoring through a replaceable board. (Part code 12VMPB)

DIMENSIONS

- 1202SM-1 / 1203SM-1
- 225H x 196W x 75D (mm)
 - 1.46kg (Boxed) · 1.32kg (Unboxed)
- 1202SM-2 / 1203SM-2 / 1205SM-2
- 310H x 340W x 80D (mm)
 - 3.07Kg Boxed · 2.84Kg Unboxed

FEATURES

- 1202SM-1 / 1203SM-1
1202SM-2 / 1203SM-2 / 1205SM-2
- Switchmode technology
 - Constructed in a modular arrangement
 - Allows for quick upgrade to Monitored PSU
 - Mild steel construction
 - White powder coated
 - LED Indicators (mains, batt, output)
 - Seperate fused main connectors
 - Full electronic protection
 - Onboard tamper protection
 - Converts power more efficiently
 - Multiple cable entry
 - Allows for 1 x 9aH batteries

CONTENTS

- 1202SM-1 / 1203SM-1
1202SM-2 / 1203SM-2 / 1205SM-2
- Power Supply Unit
 - 2 x Battery Leads (1 x Red, 1 x Black)
 - 1 x Earth Lead - Connected
 - Wiring instructions included

OTHER PRODUCTS

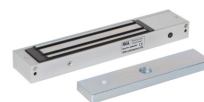
EBNT/TF-1



KPX1000



ML600



DU-CB/PTE



Manufactured by a BSIA Member