

13 Wall & Ceiling>The GU10 Ceiling Lights Aluminium

12105AC/B



10w MR16 GU10 Ceiling Light.

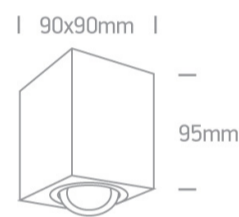
Complies with standard EN60598-1 and any other specific standards.



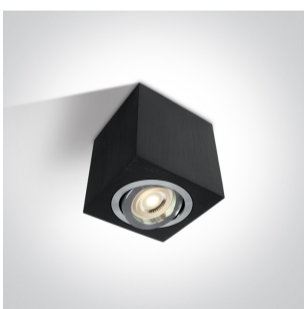
Downloads



Dimensions



Gallery



Physical Specification



Item Group	13 Wall & Ceiling
Family	The GU10 Ceiling Lights Aluminium
Order Code	12105AC/B
Colour	Black
Material	Aluminium
Shape	Circular
Height	90mm

Diameter	95mm
Surface Ceiling	Yes
Indoor	Yes
Adjustable	2 Directions

Electrical Characteristics

Gear	No
------	----

Fitting + Driver

Input Voltage	100-240V
50 Hz	Yes
60 Hz	Yes
Safety Class	
Power(Watts)	10W
IP Rating	IP20
Light Source	Replaceable lamp
Lamp Holder	GU10
Number of Lamps	1
Dimmable	Yes
F Mark	

Illumination Data

Illumination Diagram

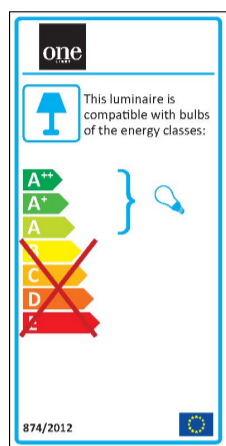


Packing Info

Box Length	10cm
Box Width	10cm
Box Height	10,5cm
Box Weight	0,46Kg
Pcs/Carton	10

Carton Length	53cm
Carton Width	22cm
Carton Height	13cm
Carton Weight	4,7Kg
Barcode	5291889027478
HS Code	9405409900

Energy Label



Certification & Warranty

Warranty	3 Years
Weee Directive	Yes

switch to
one light!

one
LIGHT

