

06 Downlights Fixed LED>The COB Downlight Range Die Cast

10120CA/W/C



20W LED recessed downlight, IP20. Ideal for general lighting applications.

Complete with 500mA driver.

Complies with standard EN60598-1 and any other specific standards.



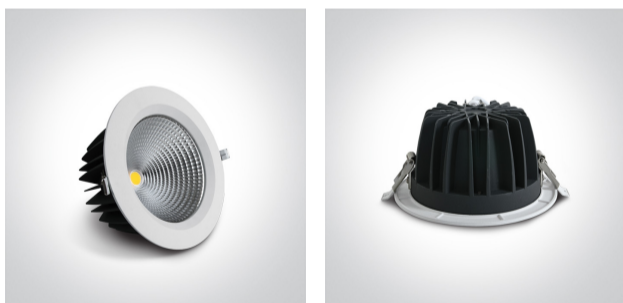
Downloads



Dimensions



Gallery



Physical Specification

Item Group

06 Downlights Fixed LED

Family

The COB Downlight Range Die Cast

Order Code

10120CA/W/C

Colour

White

Material

Die Cast

Shape



Circular


Height

75mm

Diameter	170mm
Cutout Hole Diameter	145mm
Recessed Ceiling	Yes
Depth Required	100mm
Indoor	Yes
Adjustable	No

Electrical Characteristics

Gear	External-Included
Fitting + Driver	
Input Voltage	220-240V
50 Hz	Yes
60 Hz	Yes
Safety Class	
Power(Watts)	20W
IP Rating	IP20
Light Source	LED built in
Dimmable	No
F Mark	

Fitting	
Input Type	Constant Current
Input Current	500mA
Voltage	38V
Safety Class	
Power(Watts)	19W
IP Rating	IP20
Light Source	LED built in
LED Type	COB
LED Brand	Epistar

Gear

Gear Type

Led Driver

Input Voltage

220-240V

50 Hz

Yes

60 Hz

Yes

Power(Watts)

12,5-21W

Power Factor

0,9

Constant Current

Yes

500mA

25-42V

IP Rating

IP20

Safety Class



Dimmable

No

Ambient Temp

45°C

Operating Temp

85°C

Housing Material

Plastic

Output Terminal

Cable

Brand

Lifud

Protection

Short Circuit and Overload

Illumination Data

Colour Temperature

4000K

Lumen Output

1800lm

Light Efficiency

90lm/W

CRI

80

Beam Angle

60°

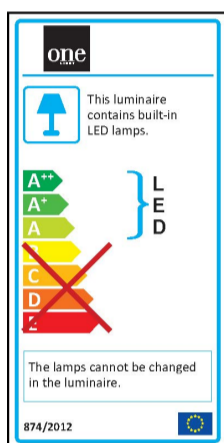
Illumination Diagram



Packing Info

Box Length	18,5cm
Box Width	8,5cm
Box Height	17,5cm
Box Weight	0,73Kg
Pcs/Carton	20
Barcode	5291889052029
HS Code	9405409900

Energy Label



Certification & Warranty

Warranty	2 Years
Average Lifetime	30000hrs
Weee Directive	Yes

switch to
one light!

one
LIGHT

