

06 Downlights Fixed LED>The COB Downlight Range Die Cast

10115CA/W/W



15W LED recessed downlight, IP20. Ideal for general lighting applications.

Complete with 350mA driver.

Complies with standard EN60598-1 and any other specific standards.



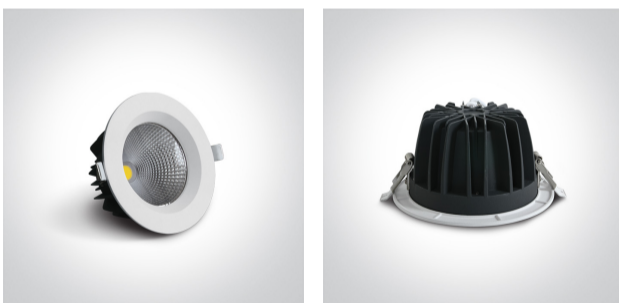
Downloads



Dimensions



Gallery






Physical Specification

| | |
|------------|----------------------------------|
| Item Group | 06 Downlights Fixed LED |
| Family | The COB Downlight Range Die Cast |
| Order Code | 10115CA/W/W |
| Colour | White |
| Material | Die Cast |
| Shape | Circular |
| Height | 75mm |

| | |
|----------------------|-------|
| Diameter | 145mm |
| Cutout Hole Diameter | 125mm |
| Recessed Ceiling | Yes |
| Depth Required | 100mm |
| Indoor | Yes |
| Adjustable | No |

Electrical Characteristics

| Gear | External-Included |
|------------------|---|
| Fitting + Driver | |
| Input Voltage | 220-240V |
| 50 Hz | Yes |
| 60 Hz | Yes |
| Safety Class |  |
| Power(Watts) | 15W |
| IP Rating | IP20 |
| Light Source | LED built in |
| Dimmable | No |
| F Mark |  |

| Fitting | |
|---------------|---|
| Input Type | Constant Current |
| Input Current | 350mA |
| Voltage | 37,2V |
| Safety Class |  |
| Power(Watts) | 13W |
| IP Rating | IP20 |
| Light Source | LED built in |
| LED Type | COB |
| LED Brand | Epistar |

Gear

Gear Type

Led Driver

Input Voltage

220-240V

50 Hz

Yes

60 Hz

Yes

Power(Watts)

9-14,7W

Power Factor

0,9

Constant Current

Yes

350mA

25-42V

IP Rating

IP20

Safety Class



Dimmable

No

Ambient Temp

45°C

Operating Temp

85°C

Housing Material

Plastic

Output Terminal

Cable

Manufacturer

Lifud

Protection

Short Circuit and Overload

Illumination Data

Colour Temperature

3000K

Lumen Output

1275lm

Light Efficiency

85lm/W

CRI

80

Beam Angle

60°

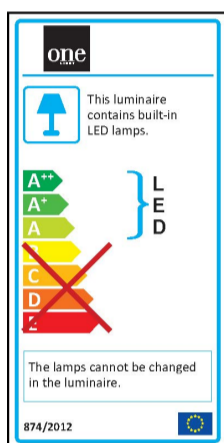
Illumination Diagram



Packing Info

| | |
|------------|---------------|
| Box Length | 18cm |
| Box Width | 8,5cm |
| Box Height | 15cm |
| Box Weight | 0,55Kg |
| Pcs/Carton | 30 |
| Barcode | 5291889052012 |
| HS Code | 9405409900 |

Energy Label



Certification & Warranty

| | |
|------------------|----------|
| Warranty | 2 Years |
| Average Lifetime | 30000hrs |
| Weee Directive | Yes |

switch to
one light!

one
LIGHT

