

02 Recessed Spots Fixed LED>The 12W Dark Light Range

## 10112E/W/W



12 W COB LED Dark Light recessed spot IP20.

Requires 700mA driver.

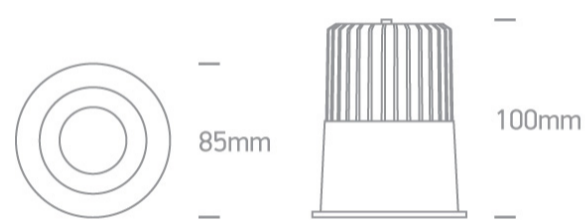
Complies with standard EN60598-1 and any other specific standards.



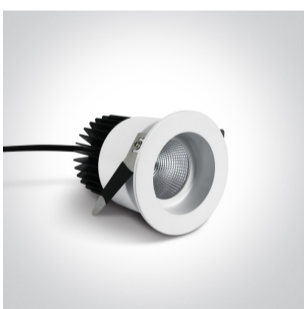
### Downloads



### Dimensions



### Gallery



### Must be ordered separately



89015A

## Related items



89015AT

## Physical Specification


|                      |                             |
|----------------------|-----------------------------|
| Item Group           | 02 Recessed Spots Fixed LED |
| Family               | The 12W Dark Light Range    |
| Order Code           | 10112E/W/W                  |
| Colour               | White                       |
| Material             | Die Cast                    |
| Shape                | Circular                    |
| Height               | 100mm                       |
| Diameter             | 85mm                        |
| Cutout Hole Diameter | 75mm                        |
| Recessed Ceiling     | Yes                         |
| Depth Required       | 110mm                       |
| Indoor               | Yes                         |
| Adjustable           | No                          |

## Electrical Characteristics

### Fitting


|               |                  |
|---------------|------------------|
| Input Type    | Constant Current |
| Input Current | 700mA            |
| Safety Class  | III              |
| Power(Watts)  | 12W              |
| IP Rating     | IP20             |
| Light Source  | LED built in     |
| LED Type      | COB              |

|              |  |
|--------------|--|
| LED Brand    |  |
| Cable Length |  |
| F Mark       |  |

|   |
|---|
| Epistar   |
| 40cm  |
|  |

### Illumination Data

|                      |  |
|----------------------|--|
| Colour Temperature   |  |
| Lumen Output         |  |
| Light Efficiency     |  |
| CRI                  |  |
| Beam Angle           |  |
| Illumination Diagram |  |
| Dark Light           |  |

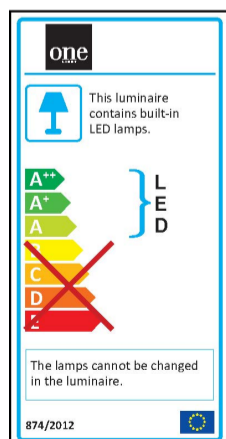
|  |
|--|
| 3000K  |
| 1100lm   |
| 91,67lm/W  |
| 80   |
| 40°  |
|  |
| Yes  |

### Packing Info

|            |  |
|------------|--|
| Box Length |  |
| Box Width  |  |
| Box Height |  |
| Box Weight |  |
| Pcs/Carton |  |
| Barcode    |  |
| HS Code    |  |

|               |
|---------------|
| 10,5cm        |
| 10,5cm        |
| 10cm          |
| 0,350kg       |
| 50            |
| 5291889048619 |
| 9405409900    |

### Energy Label



Warranty

2 Years

Weee Directive

Yes

switch to  
**one light!**

one  
LIGHT

