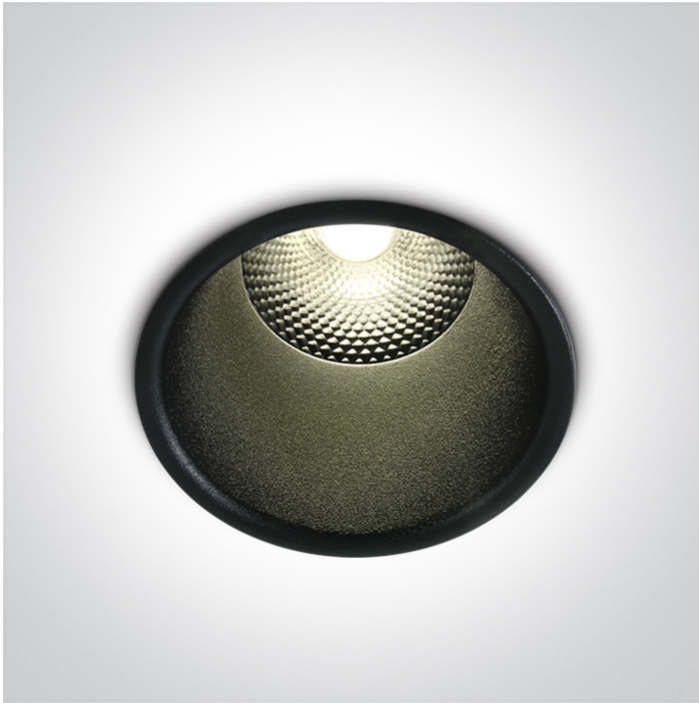


02 Recessed Spots Fixed LED>The Dark Light Pro Range

10110FD/B/W



10W COB LED recessed spot, IP20, for general lighting applications.

Supplied with non-dimmable LED driver.

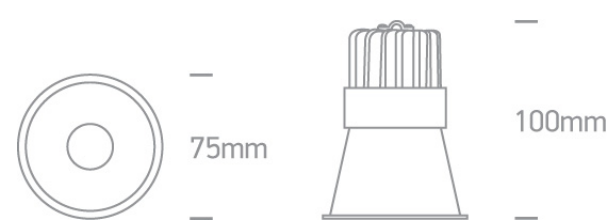
Complies with standard EN60598-1 and any other specific standards.



Downloads



Dimensions



Gallery






Physical Specification



Item Group	02 Recessed Spots Fixed LED
Family	The Dark Light Pro Range
Order Code	10110FD/B/W
Colour	Black
Material	Aluminium
Shape	Circular
Height	100mm

Diameter	75mm
Cutout Hole Diameter	68mm
Recessed Ceiling	Yes
Depth Required	130mm
Indoor	Yes
Adjustable	No

Electrical Characteristics

Gear	External-Included
Fitting + Driver	
Input Voltage	220-240V
50 Hz	Yes
60 Hz	Yes
Safety Class	
Power(Watts)	10W
IP Rating	IP20
Light Source	LED built in
Dimmable	No
F Mark	

Fitting	
Input Type	Constant Current
Input Current	300mA
Voltage	30V
Safety Class	
Power(Watts)	9W
IP Rating	IP20
Light Source	LED built in
LED Type	COB
LED Brand	Epistar

LED Number	1
F Mark	
Gear	
Gear Type	Led Driver
Input Voltage	220-240V
50 Hz	Yes
60 Hz	Yes
Power(Watts)	7,5-12,6W
Power Factor	0,9
Constant Current	Yes
300mA	25-42V
IP Rating	IP20
Safety Class	
Dimmable	No
Housing Material	Plastic
Manufacturer	LIFUD

Illumination Data

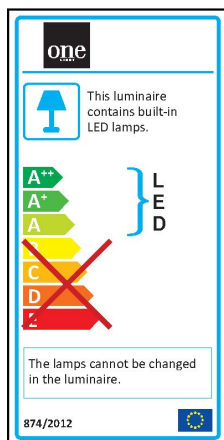
Colour Temperature	3000K
Lumen Output	800lm
Light Efficiency	80lm/W
CRI	80
Beam Angle	24°
Illumination Diagram	
Dark Light	Yes

Packing Info

Box Length	11cm
Box Width	9cm

Box Height	12cm
Pcs/Carton	50
Barcode	5291889057376
HS Code	9405409900

Energy Label



Certification & Warranty

Warranty	2 Years
Weee Directive	Yes

switch to
one light!

one
LIGHT

