

06 Downlights Fixed LED>The Budget Downlight Range

## 10107T/W/C



7W SMD LED recessed downlight, budget range, IP20.

Complete with 280mA driver.

Complies with standard EN60598-1 and any other specific standards.



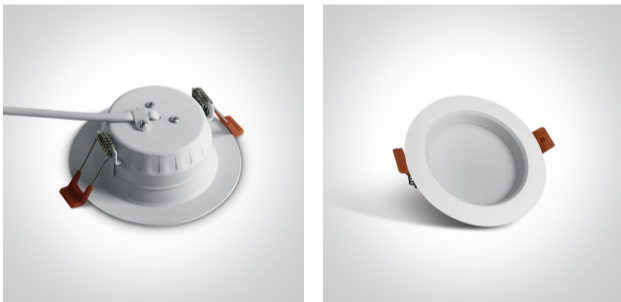
### Downloads



### Dimensions



### Gallery




### Physical Specification

Item Group	06 Downlights Fixed LED
Family	The Budget Downlight Range
Order Code	10107T/W/C
Colour	White
Material	Aluminium
Shape	Circular
Height	42mm

Diameter	116mm
Cutout Hole Diameter	85mm
Recessed Ceiling	Yes
Depth Required	60mm
Indoor	Yes
Adjustable	No

## Electrical Characteristics

Gear	External-Included
Fitting + Driver	
Input Voltage	220-240V
50 Hz	Yes
60 Hz	Yes
Safety Class	
Power(Watts)	7W
IP Rating	IP20
Light Source	LED built in
Dimmable	No
F Mark	

Fitting	
Input Type	Constant Current
Input Current	280mA
Voltage	21V
Safety Class	
Power(Watts)	5,9W
IP Rating	IP20
Light Source	LED built in
LED Type	SMD 2835
LED Brand	Sanan

## Gear

Gear Type

Led Driver

Input Voltage

220-240V

50 Hz

Yes

60 Hz

Yes

Power(Watts)

4,2-7W

Power Factor

0,5

Constant Current

Yes

Output

280mA

Voltage Range

15-25V

IP Rating

IP20

Safety Class



Dimmable

No

Housing Material

Plastic

Output Terminal

Cable

Brand

Kegu

## Illumination Data

Colour Temperature

4000K

Lumen Output

520lm

Light Efficiency

74,3lm/W

CRI

80

Beam Angle

120°

Illumination Diagram



## Packing Info

Box Length

12cm

Box Width

12cm

Box Height	6cm
Box Weight	0,190kg
Pcs/Carton	60
Barcode	5291889045786
HS Code	9405409900

## Energy Label



## Certification & Warranty

Warranty	2 Years
Weee Directive	Yes

switch to  
**one light!**

**one**  
LIGHT

