

New 2020 Edition 2>Recessed Spots Fixed LED

10107DF/W



7W COB LED Fire Rated recessed Spot, IP65.

Supplied with Triac dimmable LED driver.

Complete with white ring.

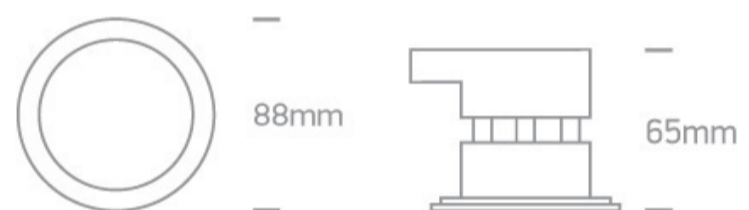
Complies with standard EN60598-1 and any other specific standards.



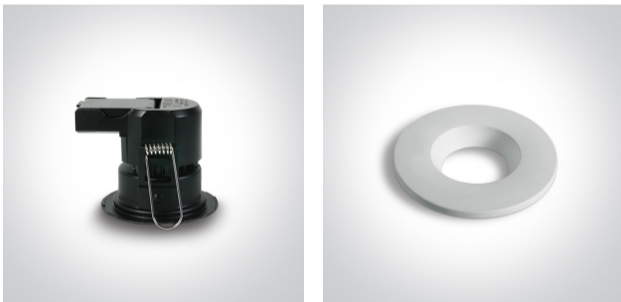
Downloads



Dimensions



Gallery



Related items



050178/B

050178/C

Physical Specification

Item Group



New 2020 Edition 2

Family

Recessed Spots Fixed LED


| | |
|----------------------|-----------|
| Order Code | 10107DF/W |
| Colour | White |
| Material | Metal |
| Shape | Circular |
| Height | 65mm |
| Diameter | 78mm |
| Cutout Hole Diameter | 65mm |
| Recessed Ceiling | Yes |
| Depth Required | 90mm |
| Indoor | Yes |
| Outdoor | Yes |
| Adjustable | No |

Electrical Characteristics

| | |
|------------------|---|
| Gear | Built In |
| Fitting + Driver | |
| Input Voltage | 220-240V |
| 50 Hz | Yes |
| 60 Hz | Yes |
| Safety Class |  |
| Power(Watts) | 7W |
| IP Rating | IP65 |
| Light Source | LED built in |
| Dimmable | Yes |
| Dimmer type | Triac |
| F Mark |  |

| | |
|--------------|------------------|
| Fitting | |
| Input Type | Constant Current |
| Power(Watts) | 7W |

| |
|--------------|
| IP Rating |
| Light Source |
| LED Type |
| F Mark |

| |
|---|
| IP65 |
| LED built in |
| SMD |
|  |

Gear

| |
|-----------------|
| Gear Type |
| Input Voltage |
| 50 Hz |
| 60 Hz |
| IP Rating |
| Safety Class |
| Output Terminal |

| |
|--|
| Led Driver |
| 220-240V |
| Yes |
| Yes |
| IP20 |
|  |
| Connector |

Illumination Data

| |
|----------------------|
| Colour Temperature |
| Lumen Output |
| Light Efficiency |
| CRI |
| Beam Angle |
| Illumination Diagram |

| |
|---|
| 3000K |
| 500lm |
| 71,42lm/W |
| 80 |
| 60° |
|  |

Packing Info

| |
|------------|
| Pcs/Carton |
| Barcode |
| HS Code |

| |
|---------------|
| 36 |
| 5291889063193 |
| 9405409900 |

Energy Label



Certification & Warranty

Warranty

3 Years

Weee Directive

Yes

switch to
one light!

one
LIGHT

