

02 Recessed Spots Fixed LED>The COB IP54 Range

## 10107DB/W/C



7W COB LED recessed spot suitable for indoor and outdoor installation, IP54.

Requires 700mA driver.

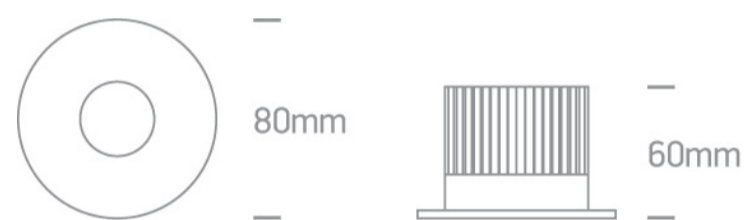
Complies with standard EN60598-1 and any other specific standards.



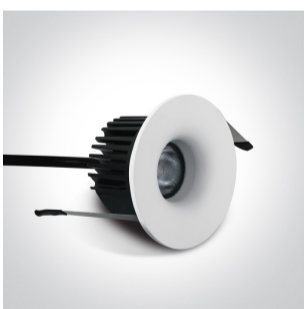
### Downloads



### Dimensions



### Gallery



### Must be ordered separately



89015A

Related items



89015AT

Physical Specification

Item Group	02 Recessed Spots Fixed LED
Family	The COB IP54 Range
Order Code	10107DB/W/C
Colour	White
Material	Aluminium
Shape	Circular
Height	60mm
Diameter	80mm
Cutout Hole Diameter	60mm
Recessed Ceiling	Yes
Depth Required	80mm
Indoor	Yes
Outdoor	Yes
Adjustable	No

Electrical Characteristics


Fitting	
Input Type	Constant Current
Input Current	700mA
Safety Class	III
Power(Watts)	7W
IP Rating	IP54
Light Source	LED built in

LED Type
LED Brand
Cable Length
F Mark

COB
Cree
40cm


### Illumination Data

Colour Temperature
Lumen Output
Light Efficiency
CRI
Beam Angle
Illumination Diagram
Dark Light

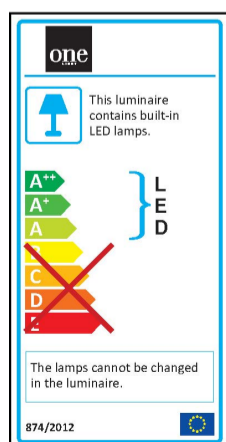
4000K
500lm
71,42lm/W
80
36°

Yes

### Packing Info

Box Length
Box Width
Box Height
Box Weight
Pcs/Carton
Barcode
HS Code

9cm
9cm
6,5cm
0,232kg
50
5291889051053
9405409900

### Energy Label



Warranty

3 Years

Weee Directive

Yes

switch to  
**one light!**

one  
LIGHT

