

06 Downlights Fixed LED>The COB Downlight Range Die Cast

10107CA/W/W



7W LED recessed downlight, IP20. Ideal for general lighting applications.

Complete with 300mA driver.

Complies with standard EN60598-1 and any other specific standards.



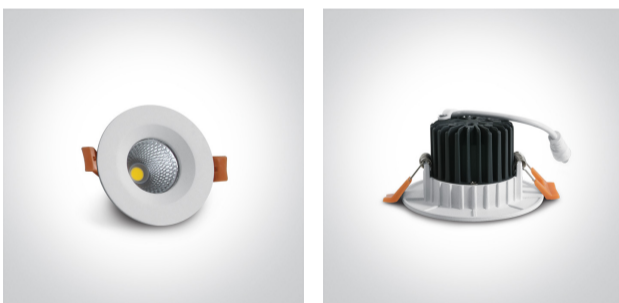
Downloads



Dimensions



Gallery



Physical Specification

Product Type

Gear

Item Group

06 Downlights Fixed LED

Family

The COB Downlight Range Die Cast

Order Code

10107CA/W/W

Colour

White

Material



Die Cast


Shape


Circular

| | |
|----------------------|------|
| Height | 55mm |
| Diameter | 95mm |
| Cutout Hole Diameter | 75mm |
| Recessed Ceiling | Yes |
| Depth Required | 70mm |
| Indoor | Yes |
| Adjustable | No |

Electrical Characteristics

| Gear | External-Included |
|------------------|---|
| Fitting + Driver | |
| Input Voltage | 220-240V |
| 50 Hz | Yes |
| 60 Hz | Yes |
| Safety Class |  |
| Power(Watts) | 7W |
| IP Rating | IP20 |
| Light Source | LED built in |
| Dimmable | No |
| F Mark |  |


| Fitting | |
|---------------|---|
| Input Type | Constant Current |
| Input Current | 300mA |
| Voltage | 21V |
| Safety Class |  |
| Power(Watts) | 6,3W |
| IP Rating | IP20 |
| Light Source | LED built in |
| LED Type | COB |

| | |
|-----------|---|
| LED Brand | Epistar |
| F Mark |  |

| |
|---|
| Epistar |
|  |

Gear

| |
|------------------|
| Gear Type |
| Input Voltage |
| 50 Hz |
| 60 Hz |
| Power(Watts) |
| Power Factor |
| Constant Current |
| 300mA |
| IP Rating |
| Safety Class |
| Dimmable |
| Ambient Temp |
| Operating Temp |
| Housing Material |
| Output Terminal |

| |
|---|
| Led Driver |
| 220-240V |
| Yes |
| Yes |
| 4,2-7,2W |
| 0,9 |
| Yes |
| 14-24V |
| IP20 |
|  |
| No |
| 45°C |
| 85°C |
| Plastic |
| Cable |

Illumination Data

| |
|----------------------|
| Colour Temperature |
| Lumen Output |
| Light Efficiency |
| CRI |
| Beam Angle |
| Illumination Diagram |

| |
|---|
| 3000K |
| 560lm |
| 80lm/W |
| 80 |
| 60° |
|  |

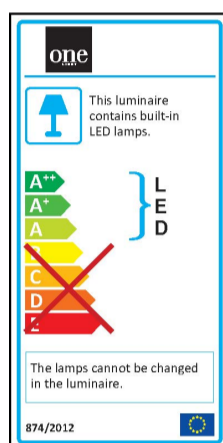
Packing Info

| |
|------------|
| Box Length |
|------------|

| |
|--------|
| 12,5cm |
|--------|

| | |
|------------|---------------|
| Box Width | 6cm |
| Box Height | 10,5cm |
| Box Weight | 0,240Kg |
| Pcs/Carton | 50 |
| Barcode | 5291889051961 |
| HS Code | 9405409900 |

Energy Label



Certification & Warranty

| | |
|------------------|----------|
| Warranty | 2 Years |
| Average Lifetime | 30000hrs |
| Wee Directive | Yes |

switch to
one light!

one
LIGHT

