

06 Downlights Fixed LED>The COB Downlight Range Die Cast

10107CA/W/C



7W LED recessed downlight, IP20. Ideal for general lighting applications.

Complete with 300mA driver.

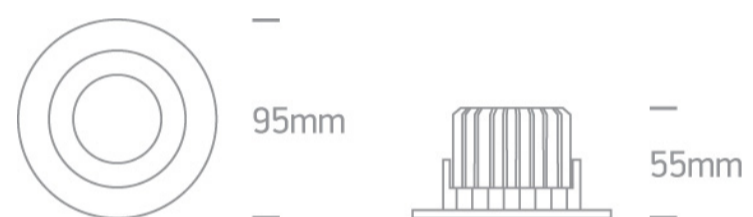
Complies with standard EN60598-1 and any other specific standards.



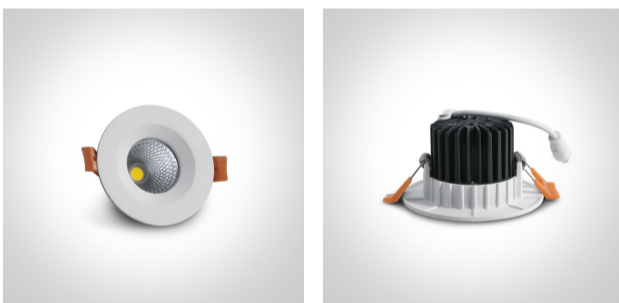
Downloads



Dimensions



Gallery






Physical Specification

Item Group	06 Downlights Fixed LED
Family	The COB Downlight Range Die Cast
Order Code	10107CA/W/C
Colour	White
Material	Die Cast
Shape	Circular
Height	55mm

Diameter	95mm
Cutout Hole Diameter	75mm
Recessed Ceiling	Yes
Depth Required	70mm
Indoor	Yes
Adjustable	No

Electrical Characteristics

Gear	External-Included
Fitting + Driver	
Input Voltage	220-240V
50 Hz	Yes
60 Hz	Yes
Safety Class	
Power(Watts)	7W
IP Rating	IP20
Light Source	LED built in
Dimmable	No
F Mark	

Fitting	
Input Type	Constant Current
Input Current	300mA
Voltage	21V
Safety Class	
Power(Watts)	6,3W
IP Rating	IP20
Light Source	LED built in
LED Type	COB
LED Brand	Epistar

Gear

Gear Type

Led Driver

Input Voltage

220-240V

50 Hz

Yes

60 Hz

Yes

Power(Watts)

4,2-7,2W

Power Factor

0,9

Constant Current

Yes

300mA

14-24V

IP Rating

IP20

Safety Class



Dimmable

No

Ambient Temp

45°C

Operating Temp

85°C

Housing Material

Plastic

Output Terminal

Cable

Manufacturer

Lifud

Protection

Short Circuit and Overload

Illumination Data

Colour Temperature

4000K

Lumen Output

560lm

Light Efficiency

80lm/W

CRI

80

Beam Angle

60°

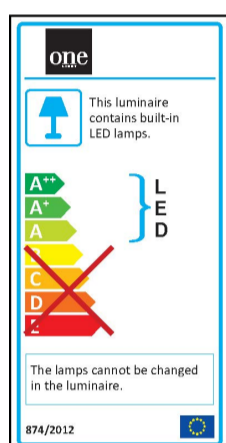
Illumination Diagram



Packing Info

Box Length	12,5cm
Box Width	6cm
Box Height	10,5cm
Box Weight	0,240Kg
Pcs/Carton	50
Barcode	5291889051954
HS Code	9405409900

Energy Label



Certification & Warranty

Warranty	2 Years
Average Lifetime	30000hrs
Weee Directive	Yes

switch to
one light!

one
LIGHT

