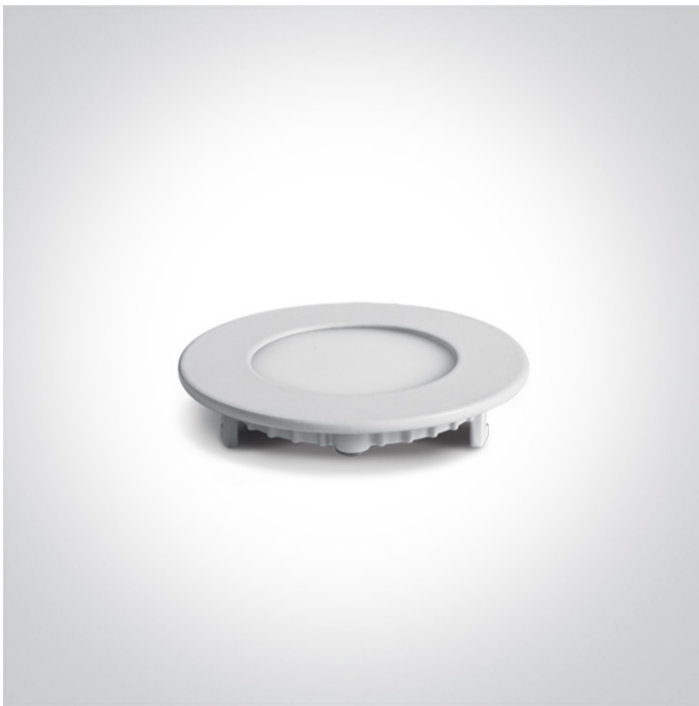


06 Downlights Fixed LED>Round Recessed Panels 3-12W

10103FA/W/C



3W slim downlight LED, IP40, ideal for commercial applications such as offices, galleries and showrooms.

Supplied with 300mA non-dimmable LED driver.

Complies with standard EN60598-1 and any other specific standards.



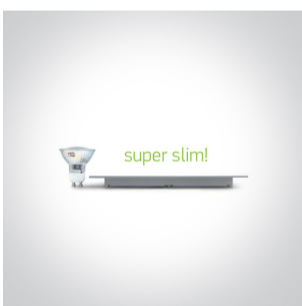
Downloads



Dimensions



Gallery






Physical Specification


| | |
|-------------------|-----------------------------|
| Item Group | 06 Downlights Fixed LED |
| Family | Round Recessed Panels 3-12W |
| Order Code | 10103FA/W/C |
| Colour | White |
| Material | Die Cast |
| Diffuser Material | Acrylic |
| Shape | Circular |

| | |
|----------------------|------|
| Height | 22mm |
| Diameter | 85mm |
| Cutout Hole Diameter | 70mm |
| Recessed Ceiling | Yes |
| Depth Required | 50mm |
| Indoor | Yes |
| Adjustable | No |


Electrical Characteristics

| Gear | External-Included |
|------------------|---|
| Fitting + Driver | |
| Input Voltage | 220-240V |
| 50 Hz | Yes |
| 60 Hz | Yes |
| Safety Class |  |
| Power(Watts) | 3W |
| IP Rating | IP40 |
| Light Source | LED built in |
| Dimmable | No |
| F Mark |  |

| Fitting | |
|---------------|---|
| Input Type | Constant Current |
| Input Current | 300mA |
| Voltage | 9V |
| Safety Class |  |
| Power(Watts) | 2,7W |
| IP Rating | IP40 |
| Light Source | LED built in |
| LED Type | SMD 2835 |

| | |
|------------------|---|
| LED Brand | Epistar |
| LED Number | 15 |
| Gear | |
| Gear Type | Led Driver |
| Input Voltage | 220-240V |
| 50 Hz | Yes |
| 60 Hz | Yes |
| Power(Watts) | 2,4-3,6W |
| Power Factor | 0,6 |
| Constant Current | Yes |
| 300mA | 8-12V DC |
| IP Rating | IP20 |
| Safety Class |  |
| Dimmable | No |
| Ambient Temp | 50°C |
| Operating Temp | 75°C |
| Housing Material | Plastic |
| Brand | Lifud |

Illumination Data

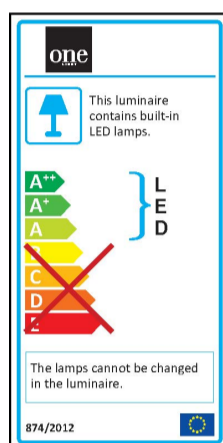
| | |
|----------------------|---|
| Colour Temperature | 4000K |
| Lumen Output | 210lm |
| Light Efficiency | 70lm/W |
| CRI | 80 |
| Beam Angle | 120° |
| Illumination Diagram |  |

Packing Info

| | |
|------------|--------|
| Box Length | 14,2cm |
|------------|--------|

| | |
|------------|---------------|
| Box Width | 3,1cm |
| Box Height | 4cm |
| Box Weight | 0,170Kg |
| Pcs/Carton | 60 |
| Barcode | 5291889042822 |
| HS Code | 9405109890 |

Energy Label



Certification & Warranty

| | |
|------------------|-------------|
| Warranty | 2 Years |
| Average Lifetime | 30000 hours |
| Weee Directive | Yes |

switch to
one light!

one
LIGHT

