

02 Recessed Spots Fixed LED>The 1W/3W LED Dark Light Range

10103D/W/W



1W/3W COB LED recessed spot IP20.

Requires 350mA/700mA driver.

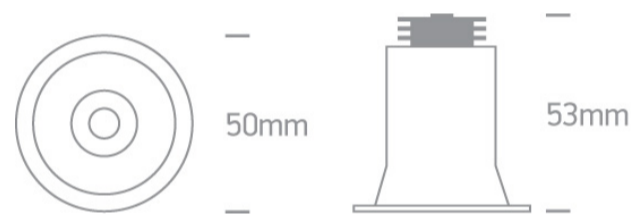
Complies with standard EN60598-1 and any other specific standards.



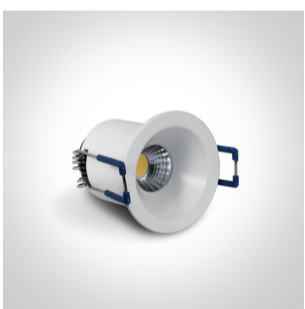
Downloads



Dimensions



Gallery



Must be ordered separately



89004





89004A

Physical Specification


Item Group	02 Recessed Spots Fixed LED
Family	The 1W/3W LED Dark Light Range
Order Code	10103D/W/W
Colour	White
Material	Aluminium
Shape	Circular
Height	53mm
Diameter	50mm
Cutout Hole Diameter	43mm
Recessed Ceiling	Yes
Depth Required	65mm
Indoor	Yes
Adjustable	No

Electrical Characteristics

Fitting

Input Type	Constant Current
Input Current	350mA/700mA
Safety Class	
Power(Watts)	1W/3W
IP Rating	IP20
Light Source	LED built in
LED Brand	Epistar
LED Number	1
Cable Length	40cm
F Mark	

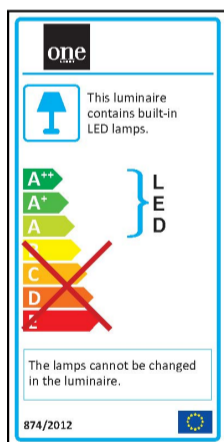
Illumination Data

Colour Temperature	3000K
Lumen Output	200lm@700mA
Light Efficiency	66,67lm/W
CRI	80
Beam Angle	40°
Illumination Diagram	
Dark Light	Yes

Packing Info

Box Length	9cm
Box Width	6cm
Box Height	5,5cm
Box Weight	0,074kg
Pcs/Carton	100
Barcode	5291889046172
HS Code	9405409900

Energy Label



Warranty

2 Years

Weee Directive

Yes

switch to
one light!

one
LIGHT

